



Shenzhen Datong Youlian Technology Co., Ltd.

## NP33x Operation Guide

Operation Manual / Configuration Tool Instructions / Driver Installation

---

## 目录

NP330/NP332 User Manual.....	3
Important Notice.....	3
Disclaimer .....	3
Copyright Notice.....	3
Technical Support .....	3
1 Introduction.....	3
1.1 Purpose of writing.....	3
1.2 Explanation of terms .....	3
2 Product Description.....	4
2.1 Product function description .....	4
2.2 System framework and composition .....	4
2.2.1 Typical applications.....	4
2.3 NP330 Product Description .....	4
2.4 Indicator light description .....	5
3 Configure the print server.....	5
3.1 USB connection.....	5
3.2 Network cable connection.....	6
3.3 Instructions for setting tools ( WINDOWS version).....	6
3.3.1 Connect using USB .....	7
3.3.2 Connect using the network.....	7
※Notice※ .....	8
3.3.3 Configuration tool software interface description.....	8
3.3.4 System parameters: .....	9
3.3.5 Network Configuration.....	10
3.3.6 Firmware update .....	11
4 Install the computer printer driver .....	12
4.1 Now start the installation .....	12
4.2 Install the printer using the dedicated printer installer .....	16
4.3 Modify printer properties .....	18
4.4 Troubleshooting .....	19
5 scan support.....	21
5.1 Open the configuration tool of the print server.....	21
5.2 Open the tool software directly.....	21
5.3.1 Set VirtualHere software language.....	22
5.3.2 Connecting the Scanner .....	22
5.4 Troubleshooting VirtualHere .....	23

---

# NP330/NP332 User Manual

## Important Notice

Thank you for purchasing the "Network Print Server" product (hereinafter referred to as the print server) produced by Shenzhen Datong Youlian Technology Co., Ltd. Before installing and using the product for the first time, please read this statement carefully so that you can better understand and use this product.

## Disclaimer

We are committed to continuously improving product functions and improving service quality, so this manual is based on the existing functions of the print server and will be updated with software upgrades. Its contents are subject to change without prior notice, please go to our official website to download the latest version of the manual.

We have made every effort to ensure the accuracy and reliability of this manual when writing this manual, but accept no responsibility for loss or damage caused by omissions, inaccuracies or typographical errors in this manual.

## Copyright Notice

The copyright of this manual belongs to Shenzhen Datong Youlian Technology Co., Ltd., and reserves the right of final interpretation and modification of this manual and statement. Without the prior written permission of Shenzhen Datong Youlian Technology Co., Ltd., no one may copy, extract, modify, publish, publicize, translate this manual into other languages or use it for commercial purposes in any form.

## Technical Support

We provide online remote support services. If you encounter any problems during the use of the product, you can call our service hotline at any time: 0755-28070734 or consult through the corporate QQ : 583321805. You can also log on to our official website: [www.datongsmart.com](http://www.datongsmart.com) to keep abreast of the latest product developments and downloads Required technical documentation. For details, please refer to the content of the customer service section in the function introduction in Chapter 2 of this manual.

## 1 Introduction

### 1.1 Purpose of writing

The purpose of this user manual is to describe various operations and functions of the NP330/NP332 print server, so as to guide users to use this product more quickly and correctly. The manual is divided into the following parts: Introduction, Function Introduction, User Manual, Computer Configuration User Manual and Mobile Version User Manual.

### 1.2 Explanation of terms

Configuration tool: refers to the tool software on the computer side, mainly for setting the parameters of the print server.



AP : Refers to the wireless WIFI network hotspot. The print server with WIFI function can connect to the AP wirelessly .

## 2 Product Description

### 2.1 Product function description

The print server mainly provides network printing support for USB printers. Computers and mobile phones in the intranet can be connected to the print server through the network (network cable, WIFI ) to print.

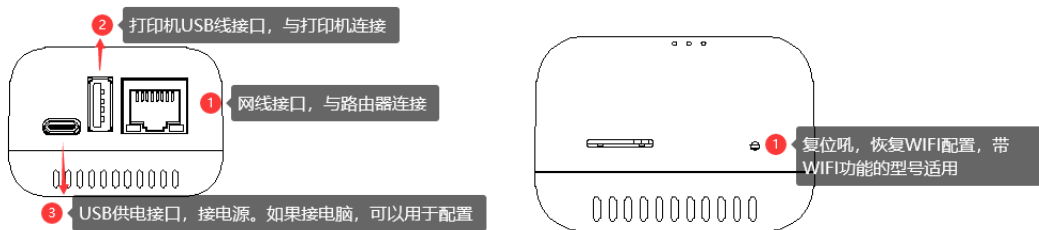
### 2.2 System framework and composition

#### 2.2.1 Typical applications

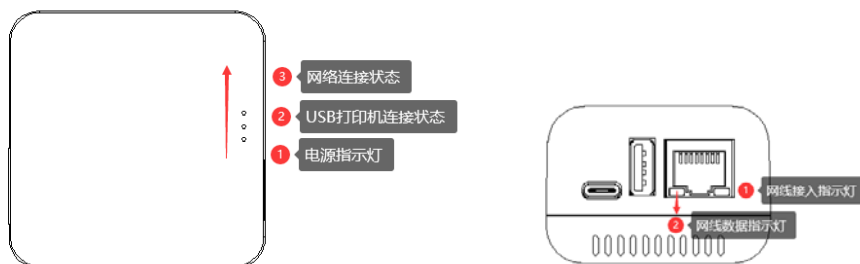


### 2.3 NP330 Product Description

#### 2.3.1 Interface description

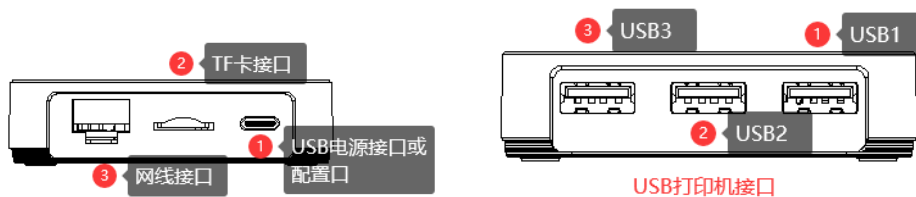


#### 2.3.2 Indicator light description

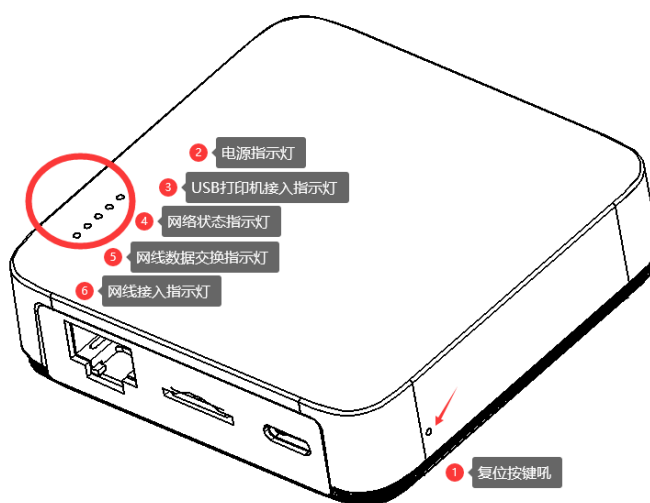


## 2.4 Indicator light description

### 2.4.1 Interface description



### 2.4.2 Indicator light and reset button



## 3 Configure the print server

### 3.1 USB connection

The USB cable provided by the print server can be used as power supply for the product, and it can also communicate with the computer. When connecting with the computer, the parameters of the print server can be set by means of USB .

The configuration tool provided by our company is the WINDOWS version, so the MAC system is not suitable for USB connection.

The USB connection can provide users with all function settings. When the print server cannot work normally or cannot connect to the network normally, the print server can be re-configured through USB .

WINDOWS users are recommended to use this method to connect for the first time.



### 3.2 Network cable connection

When the factory network port default DHCP state, when the network cable, automatically from the router ( DHCP assigned a dynamic server) IP address, the user may router or DHCP terminal list server, a query to the current print server IP address, when the print server is normally connected to the network, the user can connect through the network through a browser or a configuration tool ( WINDOWS version). MAC systems can only be connected through a browser.

Note: It is not recommended to use the automatic IP address acquisition for such products . After connecting with the configuration tool, it is recommended to change the IP to a fixed IP address, or set it to static allocation in the router.

### 3.3 Instructions for setting tools ( WINDOWS version)

The configuration tool software is an installation-free software. After downloading and decompressing, you can run it directly.

file description

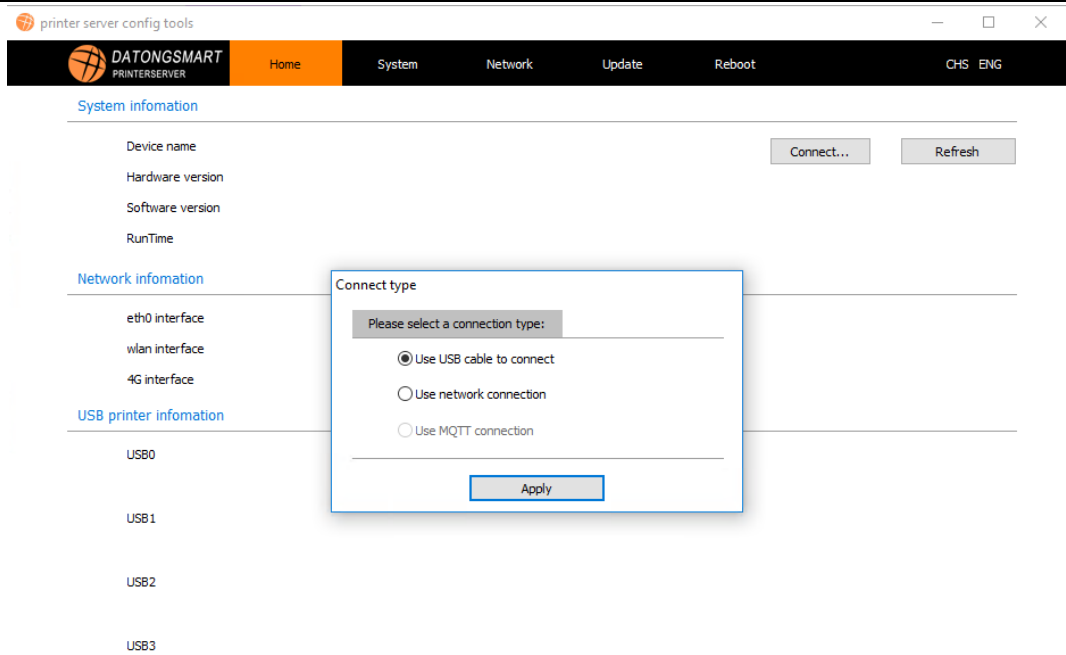
Name	Date modified	Type	Size
css	2/25/2022 10:17 PM	File folder	
InstallWizard	2/25/2022 10:17 PM	File folder	
language	2/25/2022 10:17 PM	File folder	
subprog	2/25/2022 10:17 PM	File folder	
config.ini	2/25/2022 10:18 PM	Configuration sett...	1 KB
PTS.exe	2/25/2022 10:17 PM	Application	20,233 KB
vhui32.exe	2/25/2022 10:17 PM	Application	4,894 KB
vhui64.exe	2/25/2022 10:17 PM	Application	5,600 KB

2 Printer Install wizard software

1 Config software

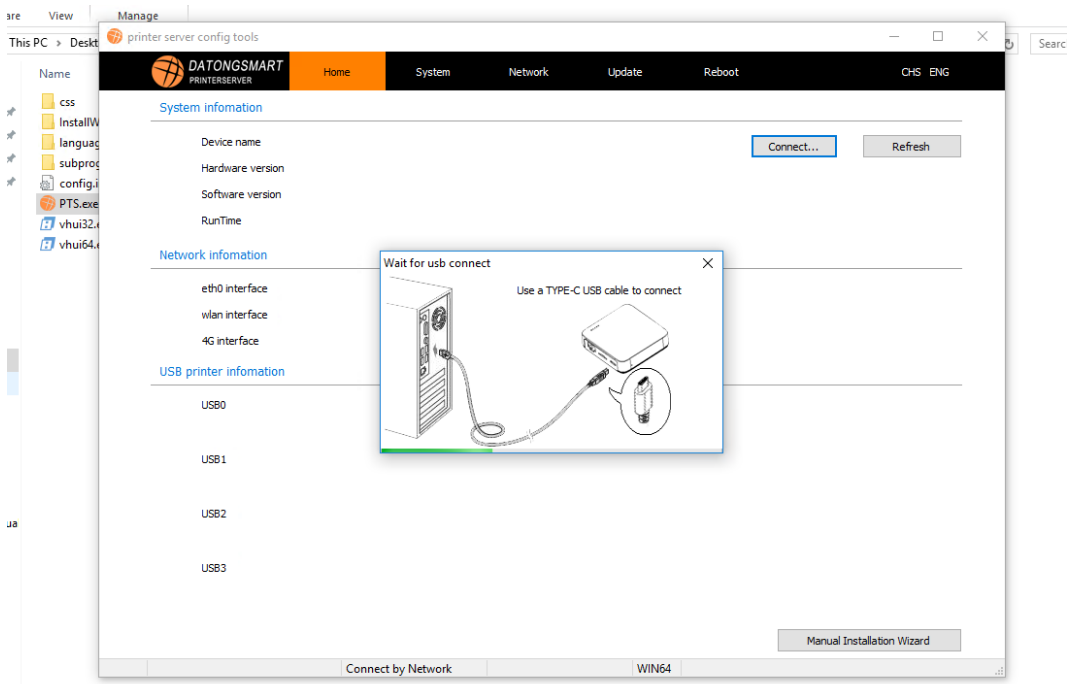
After running the configuration tool, the operating system may prompt you to allow access to the network. If you use network configuration, you must allow network access before the configuration tool can obtain a list of print servers on the network.

After running the configuration tool, the first step will prompt the user how to connect to the print server, as shown in the following figure:



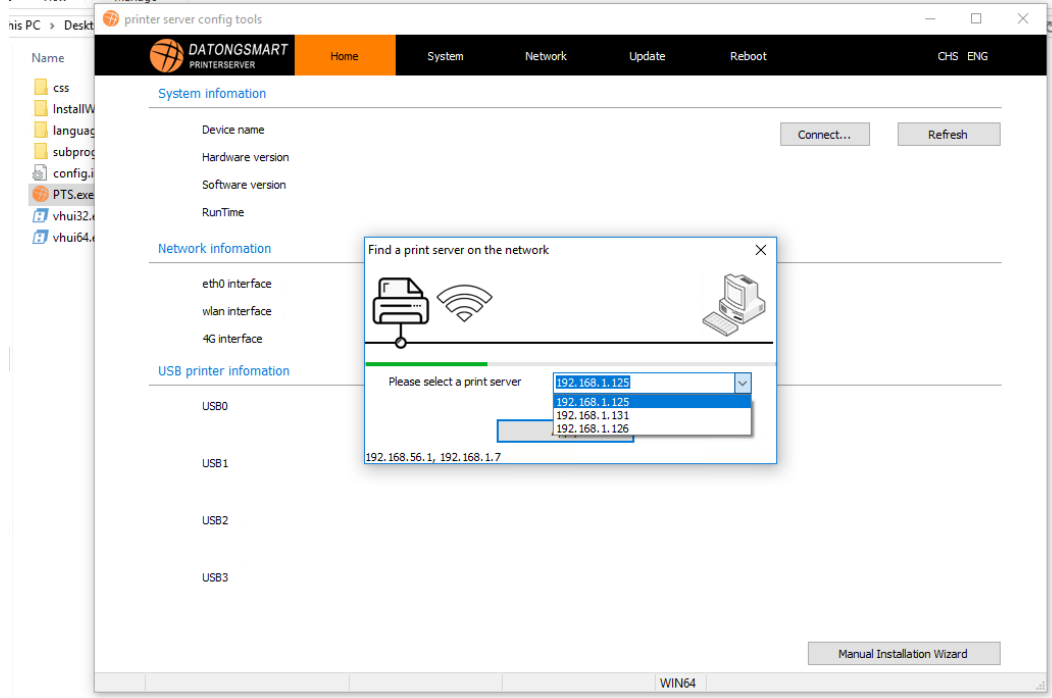
### 3.3.1 Connect using USB

When the user uses the USB connection, the software will wait for the print server to connect to the computer. When the USB is recognized by the computer, the word USB will be displayed in the lower left corner of the software .



### 3.3.2 Connect using the network

When the user selects the network connection, the software will pop up the monitor window of the print server, waiting for the print server to go online. When a print server goes online, the list in the window will list the IP address of the print server in the current network . As shown below



In this window, select the IP address of the print server that needs to be set to connect. The IP in the figure is subject to the actual situation.

※Notice※

The print server is a product with an operating system, and it takes about 20 seconds to start up from power-on to ready . Please wait.

### 3.3.3 Configuration tool software interface description

Configuration tool subsystem information, system parameters, network configuration, firmware update, restart . 5 large modules

system message:

Mainly display the information of the current print server, such as running time, network, USB interface, etc.

System parameters:

In this function module, you can modify the print server name, MAC address, print output mode, and the network print service port corresponding to the USB port.

Network Configuration:

Provide to modify the IP address of the print server , products with WIFI function can configure WIFI network. Users can use DHCP or manually assign IP addresses to configure, WIFI and network ports need to be configured separately.

Firmware update:

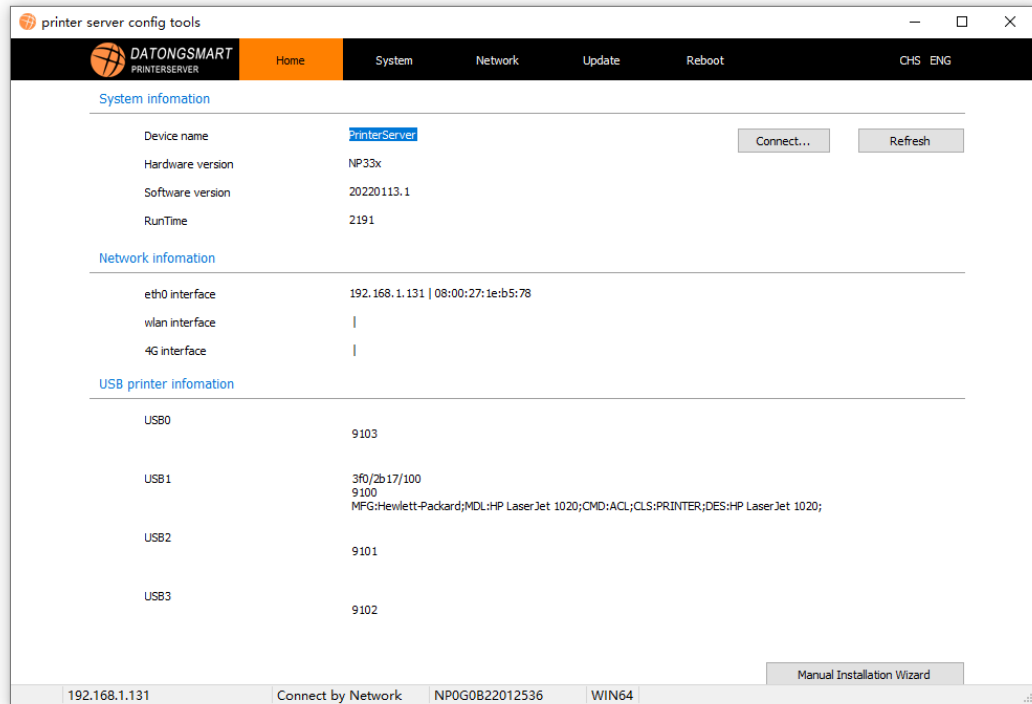
Provides the function of updating the firmware of the print server. When users need to update the firmware, they can contact our customer service to obtain the latest firmware package.

Reboot:

You can restart the print server through the tool software.







### 3.3.4 System parameters:

#### Device name:

When there are multiple print servers in the network, it is recommended to modify the device name, which can be quickly found when the mobile phone searches for the print server.

#### Print transfer mode settings:

The system defaults to output directly to the printer. When the printer has higher requirements for data transmission, you can choose to output it to the printer after receiving it.

#### Modify the MAC of the network port :

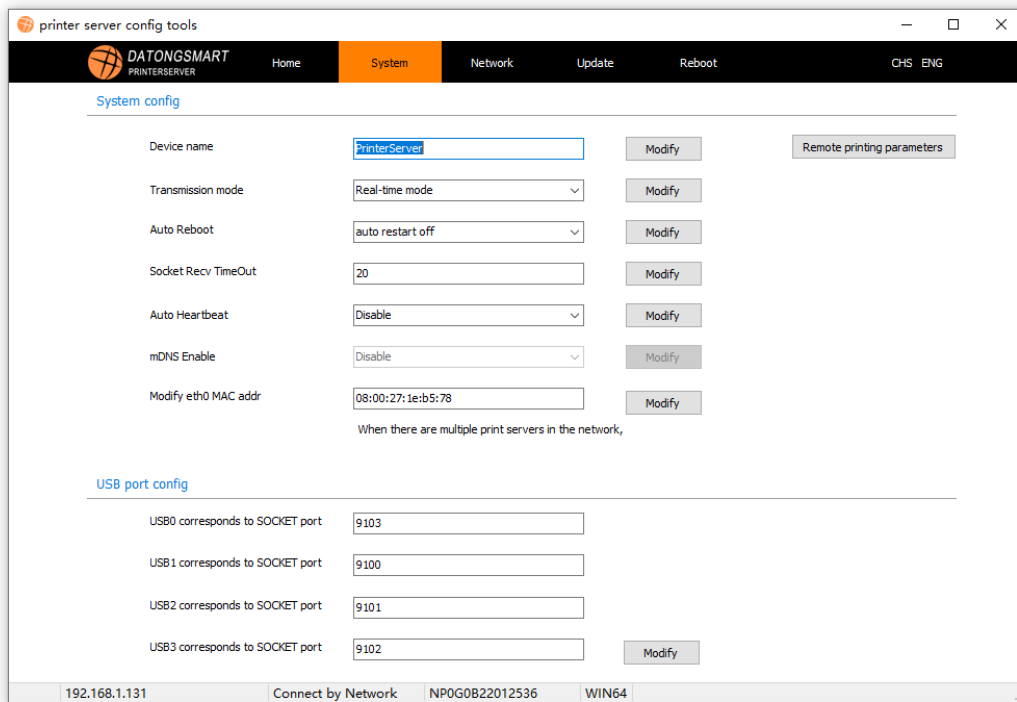
The MAC addresses of the network ports of the print server are all the same when they leave the factory . When there are multiple network cables connected to the print server in the network, the MAC address needs to be modified to ensure that the MAC address is not repeated. Otherwise, the network of the print server will lose serious packets. Even the possibility of network failure. If you use WIFI to network, you don't need to worry about it.

#### USB port configuration:

NP330 only supports one USB interface, which is USB0 , and the system defaults to 9100. The user can modify this port. When the user modifies, it needs to be modified on the port page of the printer driver.

NP332 can support up . 3 th USB interface, the corresponding port is USB1 , USB 2 , USB3 , then if only one printer, the access USB1 in. This 3 Ge USB port number can not be re-copied.

Range of changeable port numbers: 9100~65535



### 3.3.5 Network Configuration

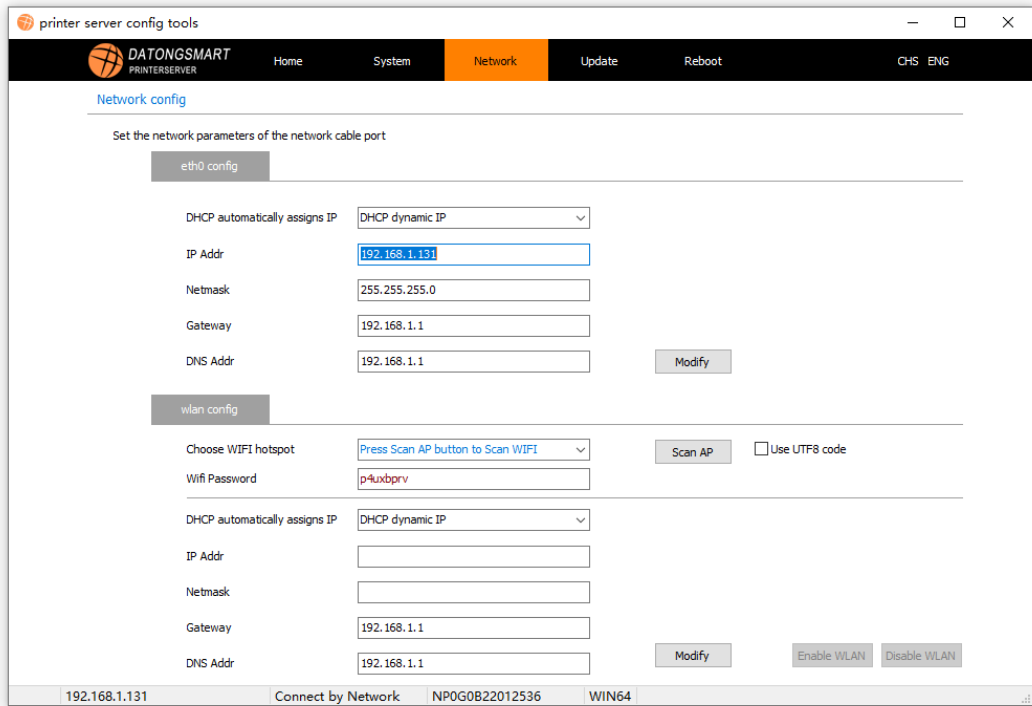
#### Network port configuration:

Users can configure the cable interface network parameters, such as IP , etc., if the manually assigned IP address, assigned in a network does not use IP addresses. Do not enter if using DHCP . It is recommended to use manual allocation for configuration. When the network cable is connected for the first time, an IP is automatically allocated , and this IP can also be used as a fixed IP address. Just modify the DHCP to automatically obtain the IP address as "fixed IP address". That's it. Click "Modify" to complete the setting.

#### WIFI configuration:

When the product supports the WIFI function, the user can connect with the user's WIFI network by setting the WIFI parameters of the print server .

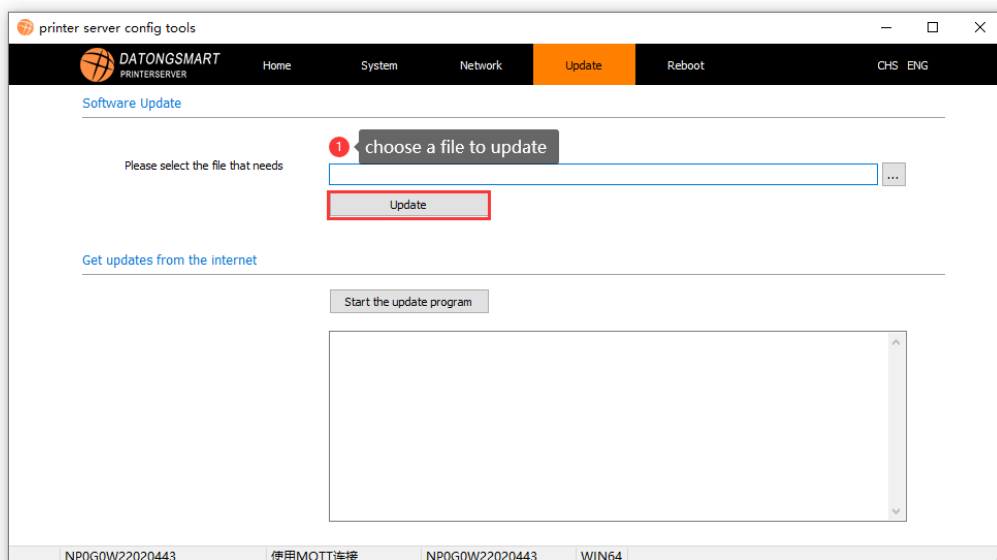
Click the "Scan" button, the print server can scan to nearby WIFI hotspots. Select the corresponding WIFI hotspot and enter the WIFI password. When a fixed IP address is required, please enter an IP address that is not used in the network. You can also use DHCP for automatic acquisition, but it is not recommended to use DHCP, unless you can set the IP address assigned by DHCP to static allocation through the router settings.



### 3.3.6 Firmware update

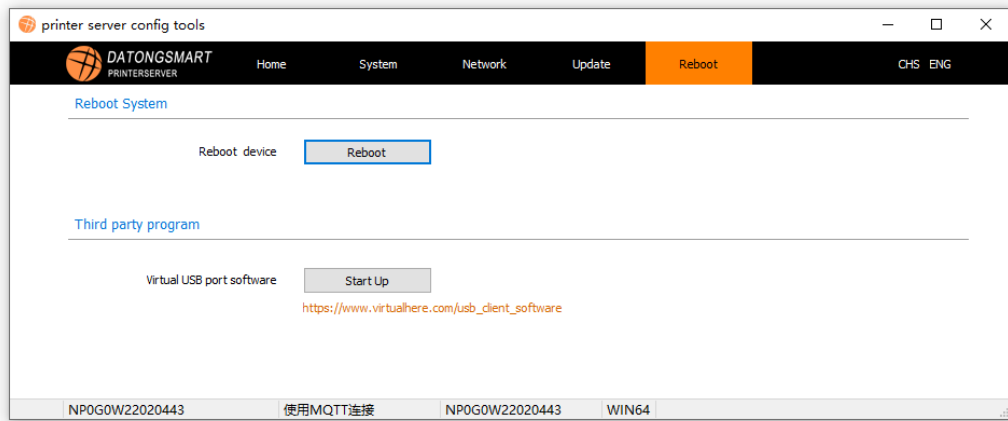
Users can use this function to update the firmware of the print server.

Click "..." to open the firmware file that needs to be updated, click "Update" to complete the operation, after the update is completed, you need to restart the print server to take effect.



### 3.3.7 Restart

The user can restart the print server through the software.



※At this time, the configuration of the print server is basically completed. If it is connected by USB , unplug the USB cable from the computer , connect it to the USB power supply provided by us, and connect the USB cable of the printer . If it is a network connection, please connect the Internet line.

## 4 Install the computer printer driver

Preparations before installing the printer driver on the WINDOWS computer :

1. Please ensure that the network connection of the print server is normal
2. Please turn on the printer, and connect the USB cable to the USB port of the print server normally .
3. Prepare the driver of the printer, which may be used in the process of installing the driver

※The following will take the HP1020 printer driver installation as an example, and the installation methods of other printers are the same. Please note the distinction.

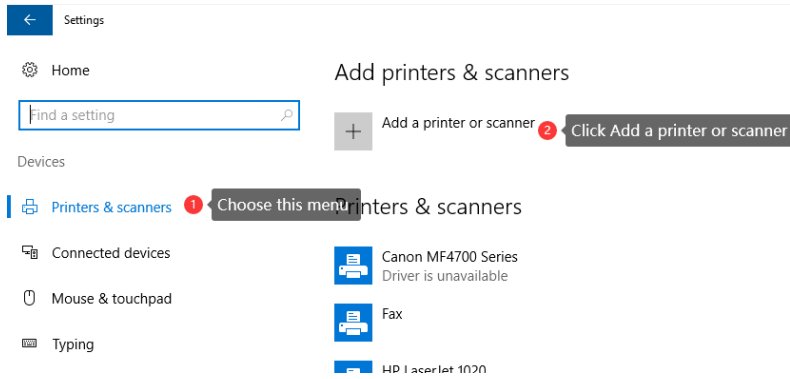
※The following installation process will be carried out on the version of WINDOWS 10 , the system of other versions is slightly different, please pay attention to the distinction.

The printer driver of the computer can be installed in two ways. The first way is to use the printer installation wizard that comes with WINDOWS . Starting from chapter 4.1 , the second way is to use the printer installation wizard program we provide to install the printer, which simplifies adding Printer steps are recommended.

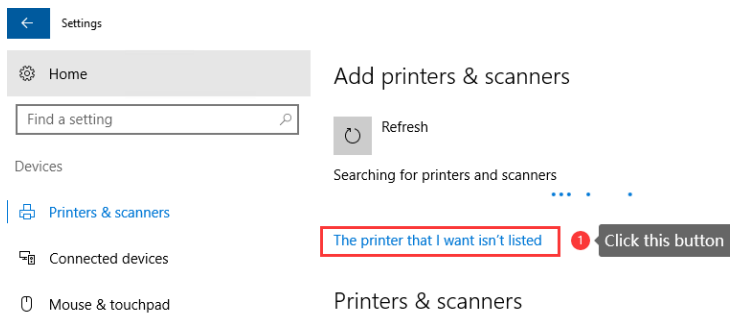
### 4.1 Now start the installation

Open the computer's settings, start menu→Devices→Printers and Scanners→ Add a printer or scanner,

as shown below

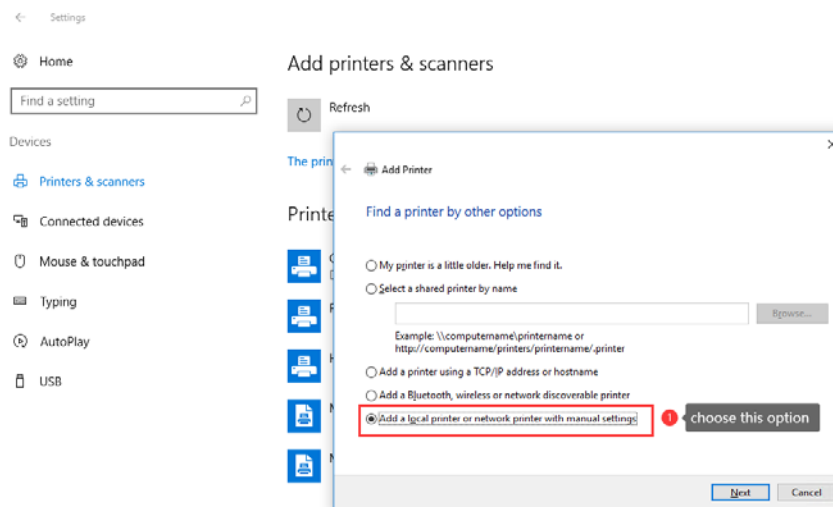


At this point, the computer will look for the printer operation, wait for a while, click "The printer I want is not in the list"



After clicking, enter the printer installation interface, select "Add a local printer or network printer by manual setting", and then click "Next"

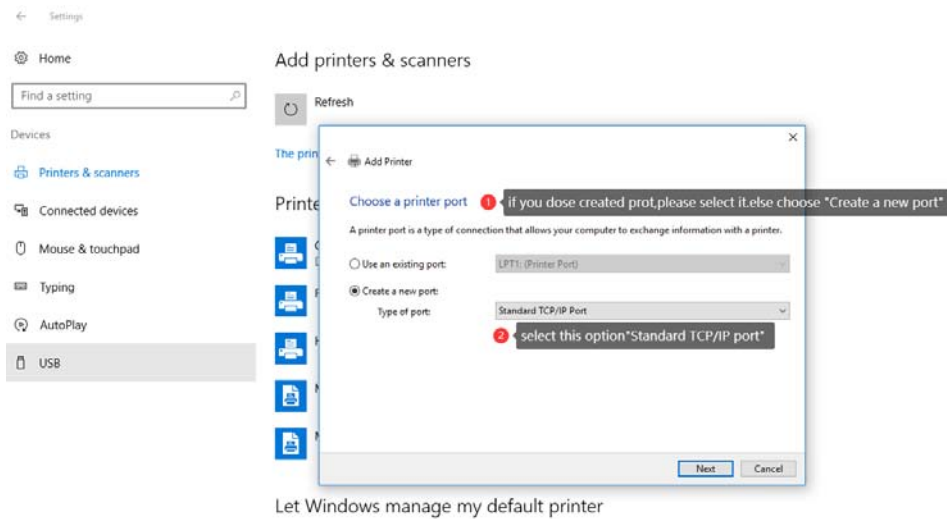
As shown below:



Let Windows manage my default printer

At this point, you need to select or add the port of the printer. If you have added the port of the print server before, please select it directly (the premise is valid)

If not, you need to add a new port, we need to select the port type as: Standard TCP/IP Port

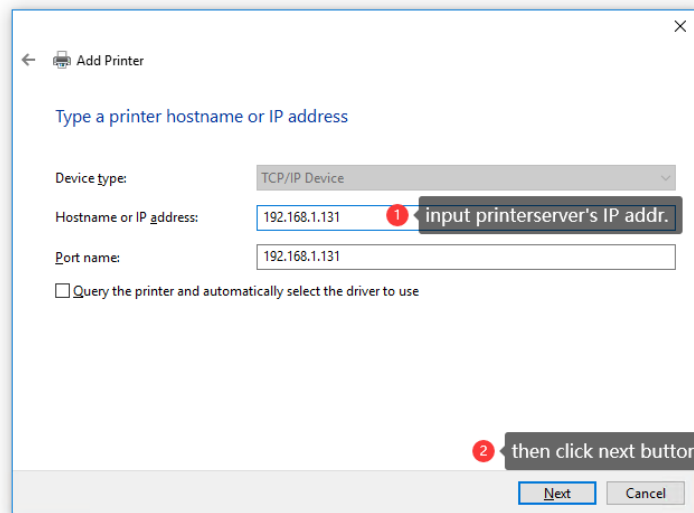


Let Windows manage my default printer

After clicking "Next", the IP address addition window will appear, as shown in the following figure:

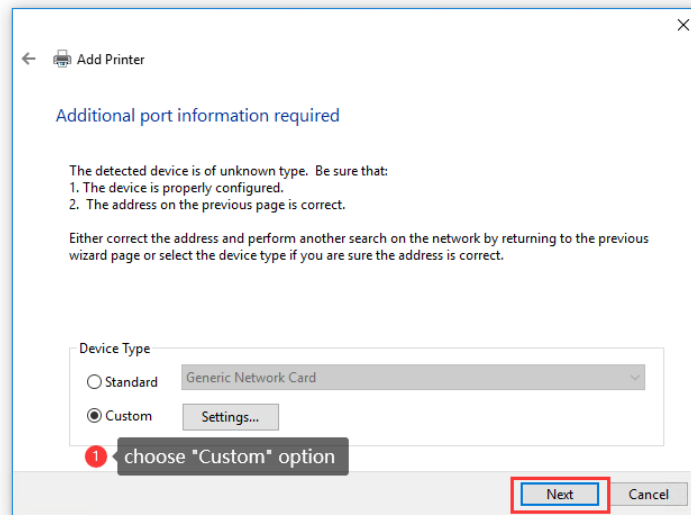
In this window, enter the IP address of the print server, the port name (optional), and uncheck "Query the printer and from ...",

Click "Next"

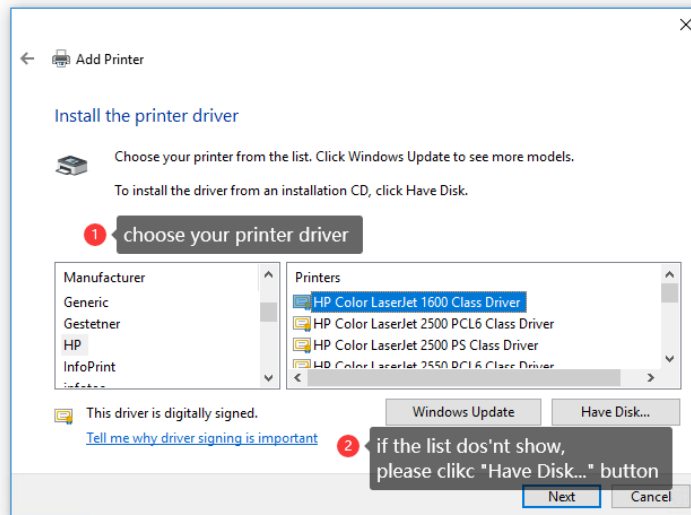


he system will query the port of the printer for a while, and after a while, the interface as shown in the figure will appear.

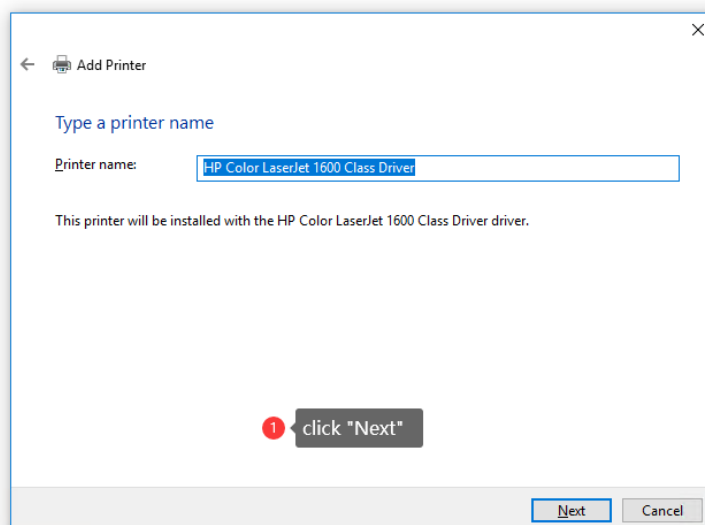
Click "Next" to enter the printer driver selection window.



In the printer driver model window, select the corresponding printer driver. If the printer model is not found in the default list, please click "Install from Disk" to find the previously prepared printer driver file directory. The extension of the driver is generally xxxx .inf ends.



This example printer HP1020 is already in the list, so just select it.



Here, keep clicking Next until the installation is complete.

## 4.2 Install the printer using the dedicated printer installer

We provide a matching printer installation wizard program, users can use this software to automatically discover the print server in the network and the connected printer model, and the program will automatically add the printer's network port and driver for the printer. It is recommended to use this tool to add, it will reduce your steps to install printing.

The directory of the software is shown in the following figure:

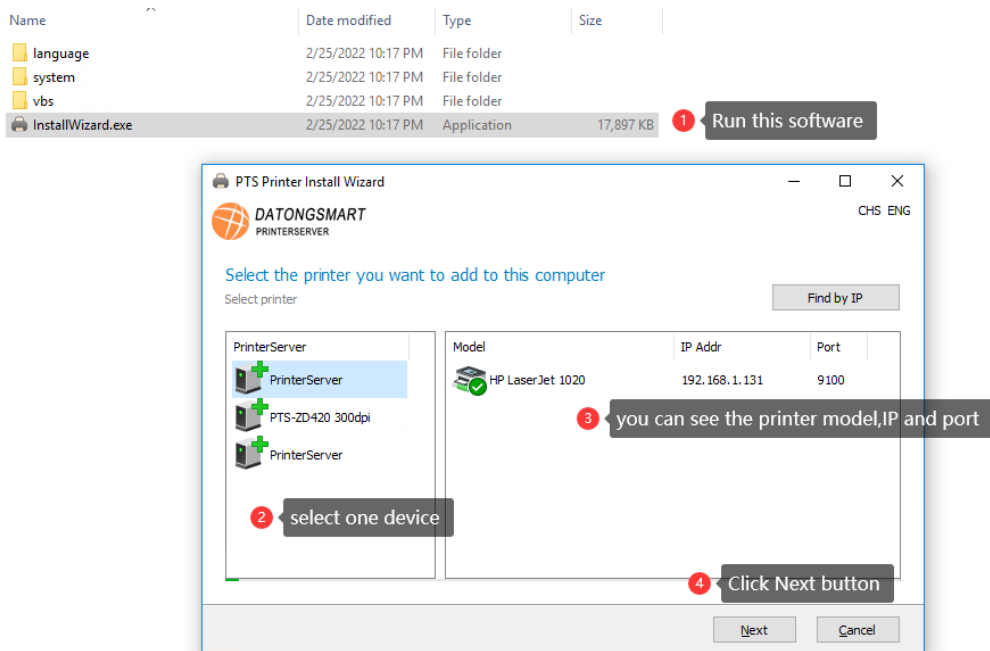
名称	修改日期	类型	大小
language	2021-09-24 21:30	文件夹	
system	2021-09-24 21:02	文件夹	
vbs	2021-09-24 8:34	文件夹	
InstallWizard.exe	2021-09-24 22:20	应用程序	13,888 KB

InstallWizard.exe is the execution program, please run the program and follow the prompts to install.

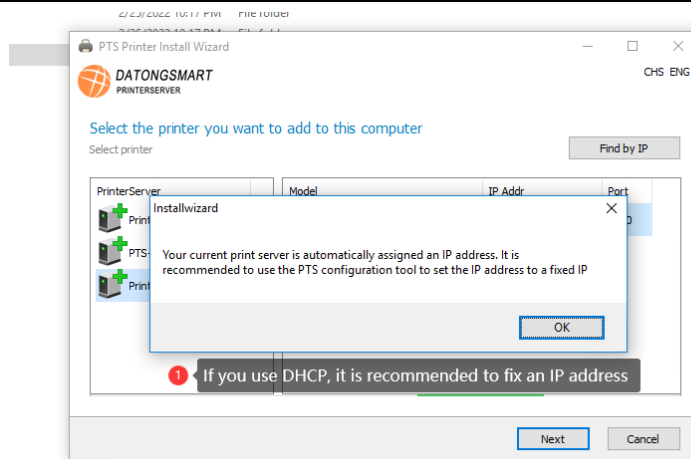
※ When the software runs for the first time, the firewall of the computer may prompt whether to allow this software to use the network, please click "Allow", if you accidentally click to block, you can copy the software directory to another directory, reopen it, or open it in WINDOWS settings in the firewall.

※ It should also be noted that the installation software and the configuration tool use the same port. When using this software, please close the configuration tool first.

When the software is opened, the software will automatically obtain the print server in the network.

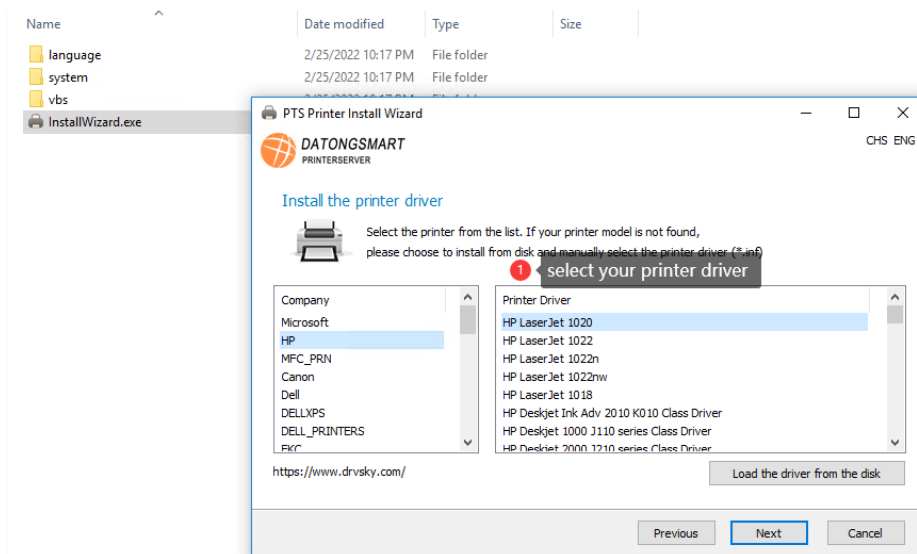


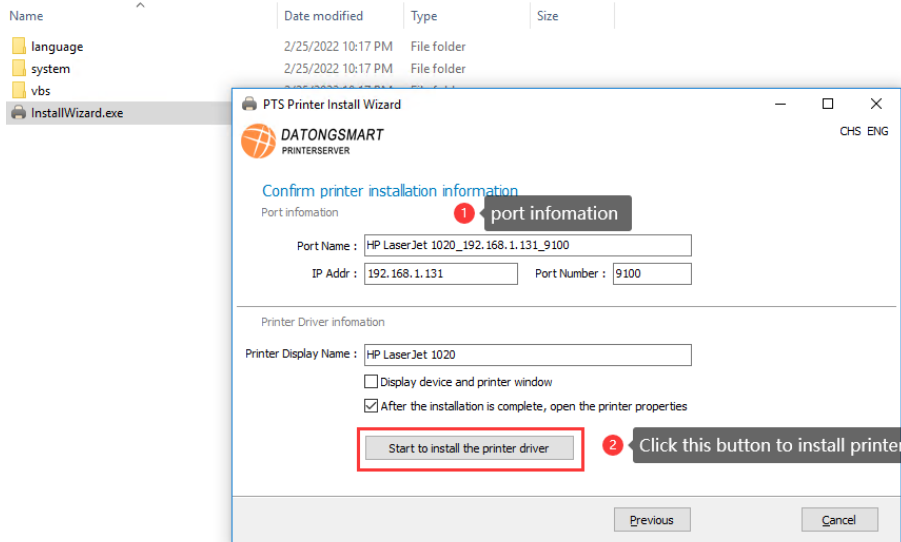




After selecting the print server and printer, click "Next" to enter the printer driver selection. On the driver selection page, the software can obtain the printer model, and there is a printer driver on the computer, the software will automatically find the corresponding driver. When there is a driver in the corresponding printer type that cannot be found in the list, the user can specify the driver file in the disk, and the file extension is INF file. As shown below:

After selecting the driver file, click "Next" to enter the page of installing the printer. This page includes the configuration of the printer network port and the printer name. Users can modify the parameters such as the port name and the printer name, as shown in the following figure:





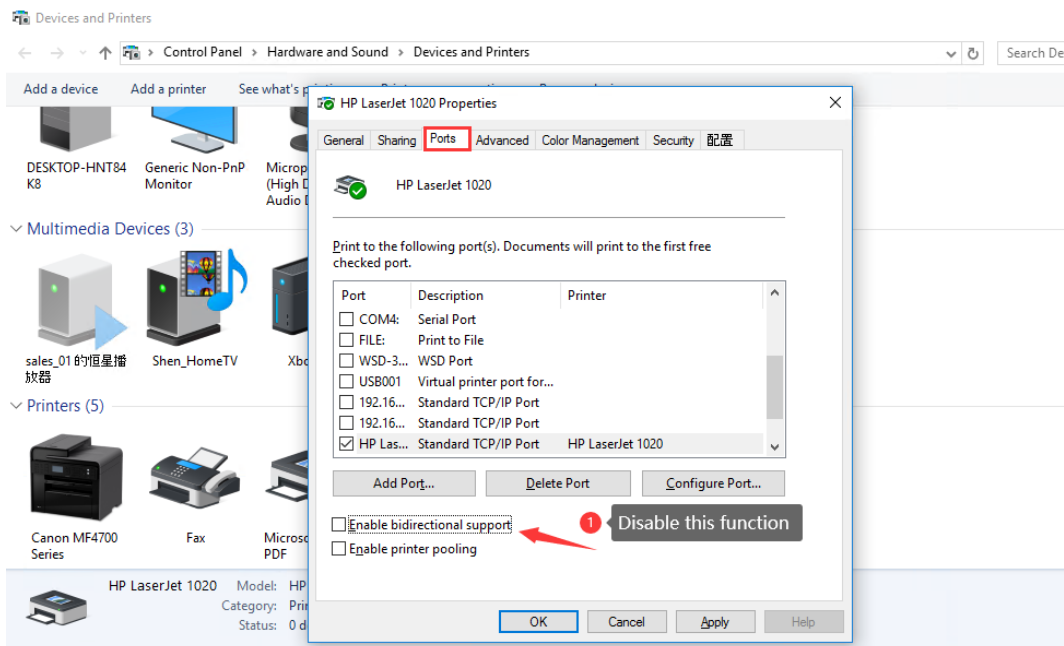
※If the installation fails, please use the method of installing the printer in the previous chapter to install it.

※ After the installation is completed, you need to modify the printer properties, please refer to the next chapter. (important)

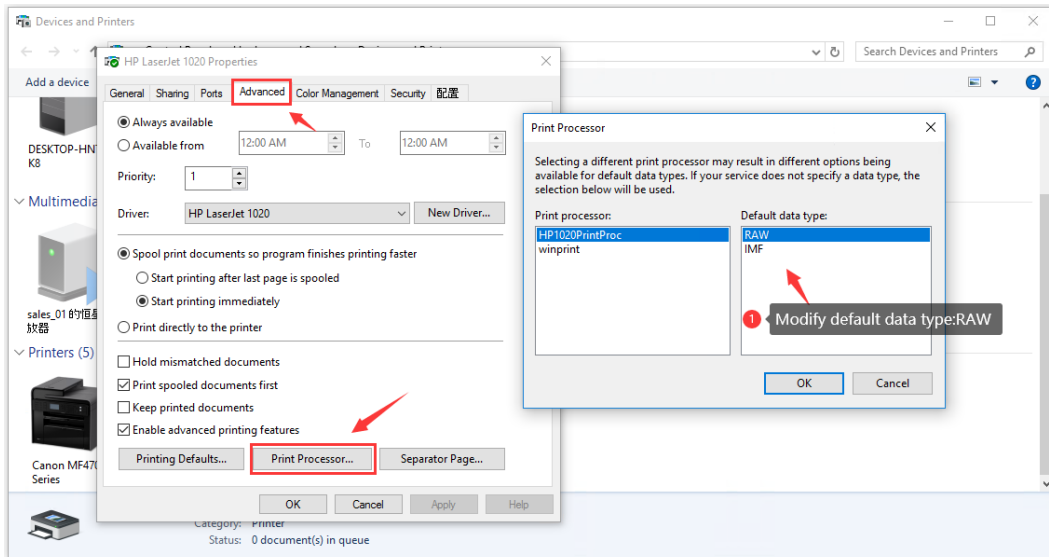
### 4.3 Modify printer properties

After the printer is installed, please check whether the following printer parameters are correct, as shown in the following figure:

※Need to cancel "Enable Bidirectional Support"



※Check whether the current print data type is RAW



HP1020 is a special printer. After installation, it defaults to IMF , so it needs to be manually changed to RAW . At present, most printers on the market support RAW . Under normal circumstances, no modification is required. It is best to confirm after installation.

So far, the printer has been installed, click General  Print Test Page to print normally.

#### 4.4 Troubleshooting

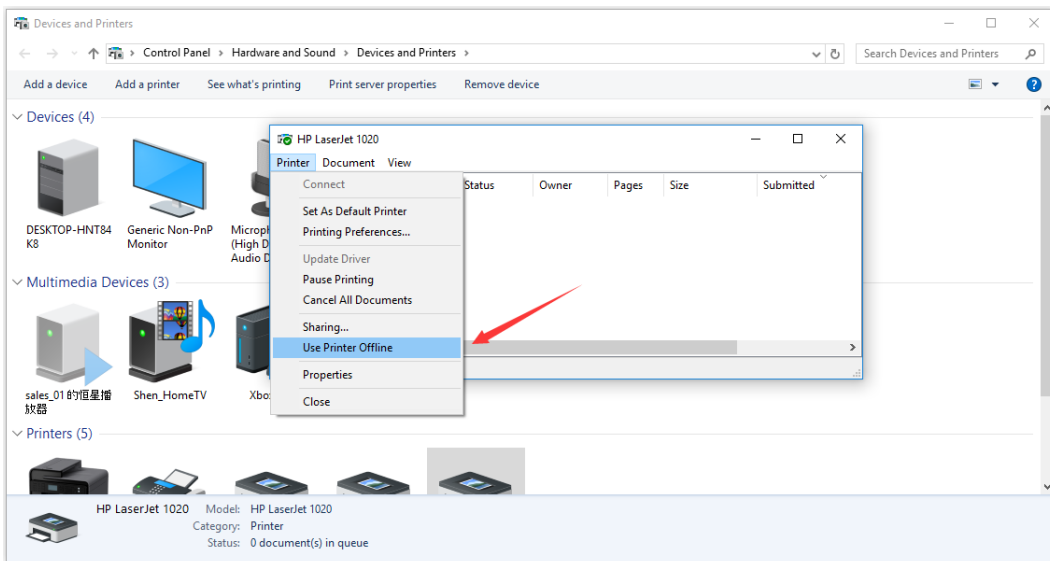
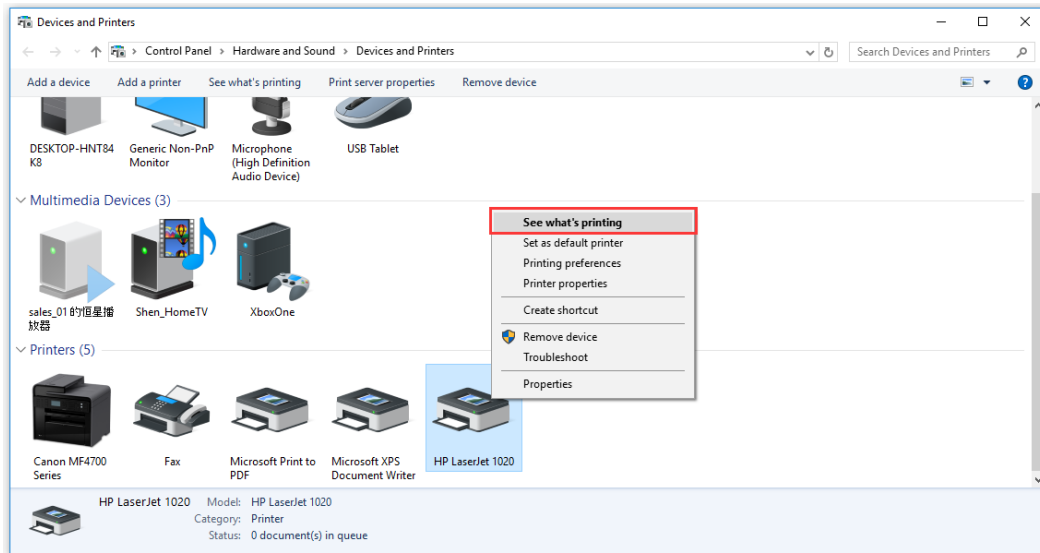
1 . To check whether the network of the print server is normal, you can use the PING command that comes with WINDOWS to PING the IP of the print server.

WIN+R key combination  Enter CMD  Enter PING xxx.xxx.xxx.xxx

2 , Check if the printer properties uncheck "Enable bidirectional support"

3 . Check if the default data format of the printer properties is RAW

4 . To check whether the printer is offline, you can select the printer  Right mouse button  View what the printing is doing  In the window that appears, select the menu "Printer"  Remove the check in front of "Use Printer Offline" (just click it), If there are print jobs in the print job, please delete all print jobs.



**5. For some printer models, such as Canon's LBP2900+ system and EPSON PHOTO xxx series, since the printer driver does not support network printing, you need to use the virtual USB port in the fifth section to connect. For details, please refer to Chapter 5.**

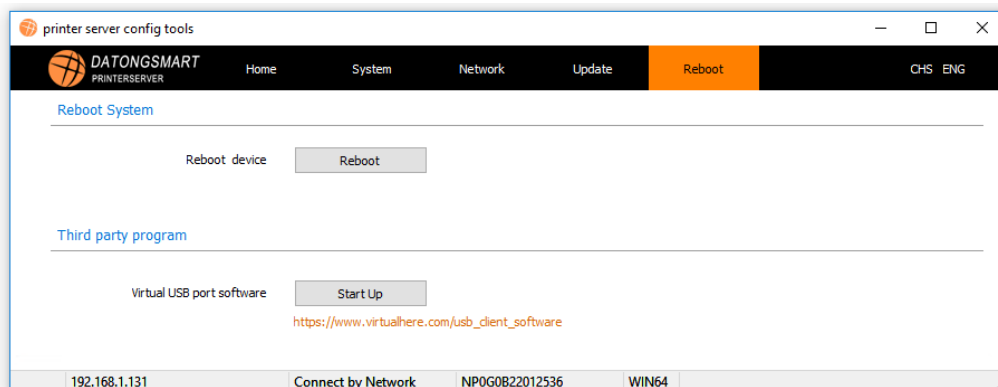
## 5 scan support

Since the scanning mode is very different from printing, the supporting scanning software of many printers does not support network scanning, so it is necessary to use the virtual USB port tool VirtualHere , which is small and does not need to be installed. There is a distinction between 32 -bit and 64 -bit versions. The corresponding operating system software version is automatically opened through our configuration tool software, and users can also manually open it. The 32 -bit and 64 -bit software versions are in the same directory as the configuration tool program, as shown in the following figure:

Name	Date modified	Type	Size
css	2/25/2022 10:17 PM	File folder	
InstallWizard	2/25/2022 10:17 PM	File folder	
language	2/25/2022 10:17 PM	File folder	
subprog	2/25/2022 10:17 PM	File folder	
config.ini	2/25/2022 10:18 PM	Configuration sett...	1 KB
PTS.exe	2/25/2022 10:17 PM	Application	20,233 KB
vhui32.exe	2/25/2022 10:17 PM	Application	4,894 KB
vhui64.exe	2/25/2022 10:17 PM	Application	5,600 KB

### 5.1 Open the configuration tool of the print server

Open PTS , there is a third-party application in the "Restart" page of the tool software, click "Start", the system automatically selects a 32 -bit or 64 -bit application according to the current operating system version. As shown below:

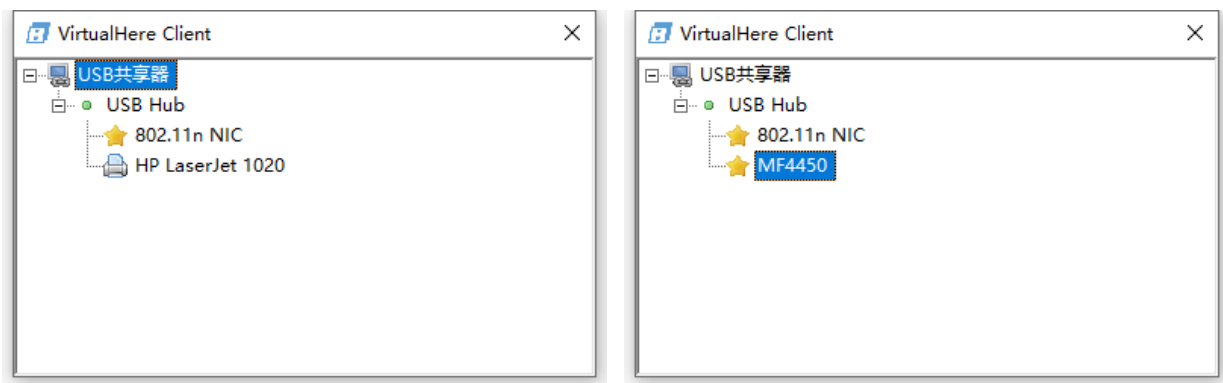


### 5.2 Open the tool software directly

Enter the root directory of the configuration tool software, find vhuixx.exe , the user chooses 32 -bit or 64 -bit according to their own computer system , 32 -bit choice: vhui32.exe , 64 -bit operating system choose vhui64.exe

### 5.3 Description of Virtual USB Tool

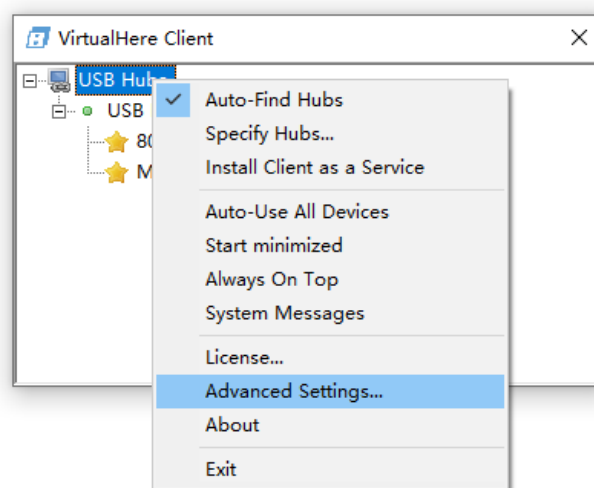
Note: When using it for the first time, the software will prompt you to install the Apple Bonjour plug-in additionally. This is an automatic network discovery protocol developed by Apple, and you can choose to install it. After opening the software, the following figure is shown:



In the picture, you can see the MFP connected to the print server. This article lists the Canon MF4450 as an example. It can be seen that the MF4450 has appeared in the list.

### 5.3.1 Set VirtualHere software language

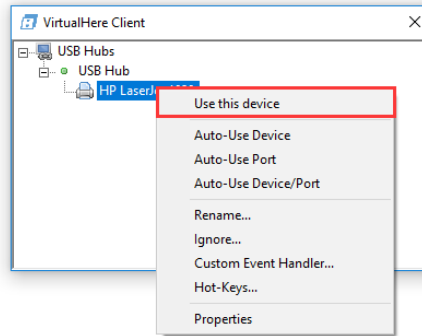
On the top-level directory of the software, right-click, select “ Advanced Settings.... ” to enter the advanced settings of the software,



### 5.3.2 Connecting the Scanner

Select MF4450 in the software (depending on the actual situation), right-click the mouse, select connect this device, the system will automatically virtualize a USB port for the printer, some old models of computers will automatically install the printer / scanner driver, use It's the same as connecting directly to a computer via USB . For some newer models of printers, just install the printer / scanner driver normally.

Name	Date modified	Type	Size
css	2/25/2022 10:17 PM	File folder	
InstallWizard	2/25/2022 10:17 PM	File folder	
language	2/25/2022 10:17 PM	File folder	
subprog	2/25/2022 10:17 PM	File folder	
config.ini	2/25/2022 10:18 PM	Configuration sett...	1 KB
PTS.exe	2/25/2022 10:17 PM	Application	20,233 KB
vhui32.exe	2/25/2022 10:17 PM	Application	4,894 KB
vhui64.exe	2/25/2022 10:17 PM	Application	5,600 KB



## 5.4 Troubleshooting VirtualHere

When opening VirtualHere, the system reports that the xxxx file is missing, as shown in the figure below, you need to download the VC++ runtime library. Users can download and install the corresponding library in Baidu query.