

Link do produktu: <https://www.gotronik.pl/modul-odtwarcza-mp3-flac-z-bluetooth-w-obudowie-p-10927.html>



Moduł odtwarzacza MP3 FLAC z Bluetooth w obudowie

Cena brutto	42,00 zł
Cena netto	34,15 zł
Czas wysyłki	24 godziny
Numer katalogowy	RBS-118
Kod producenta	BT5.0-PRO
Producent	mini moduły

Opis produktu

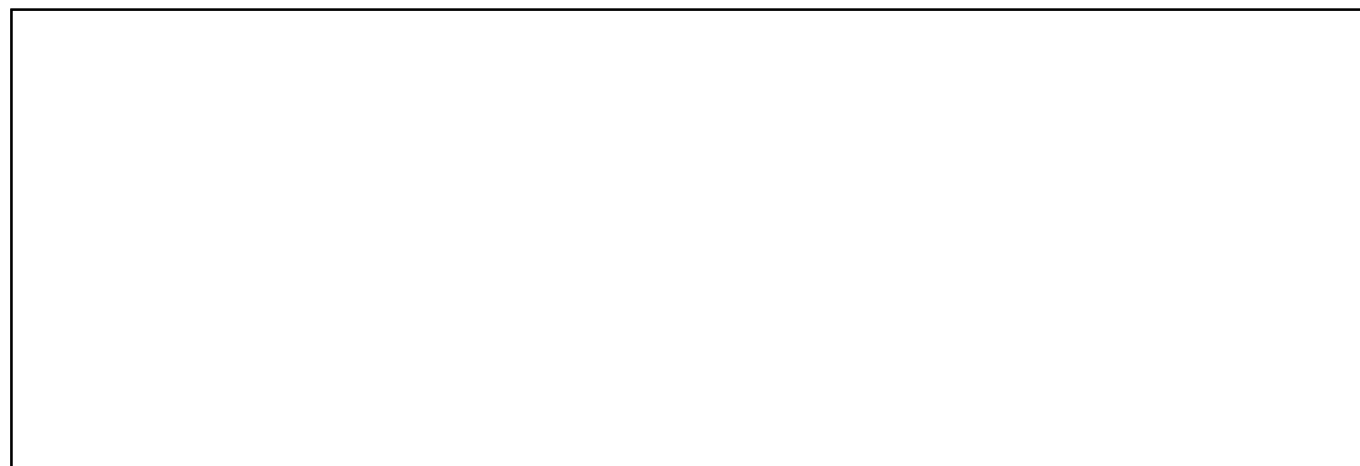
Moduł odtwarzacza MP3 WAV APE FLAC z Bluetooth w obudowie



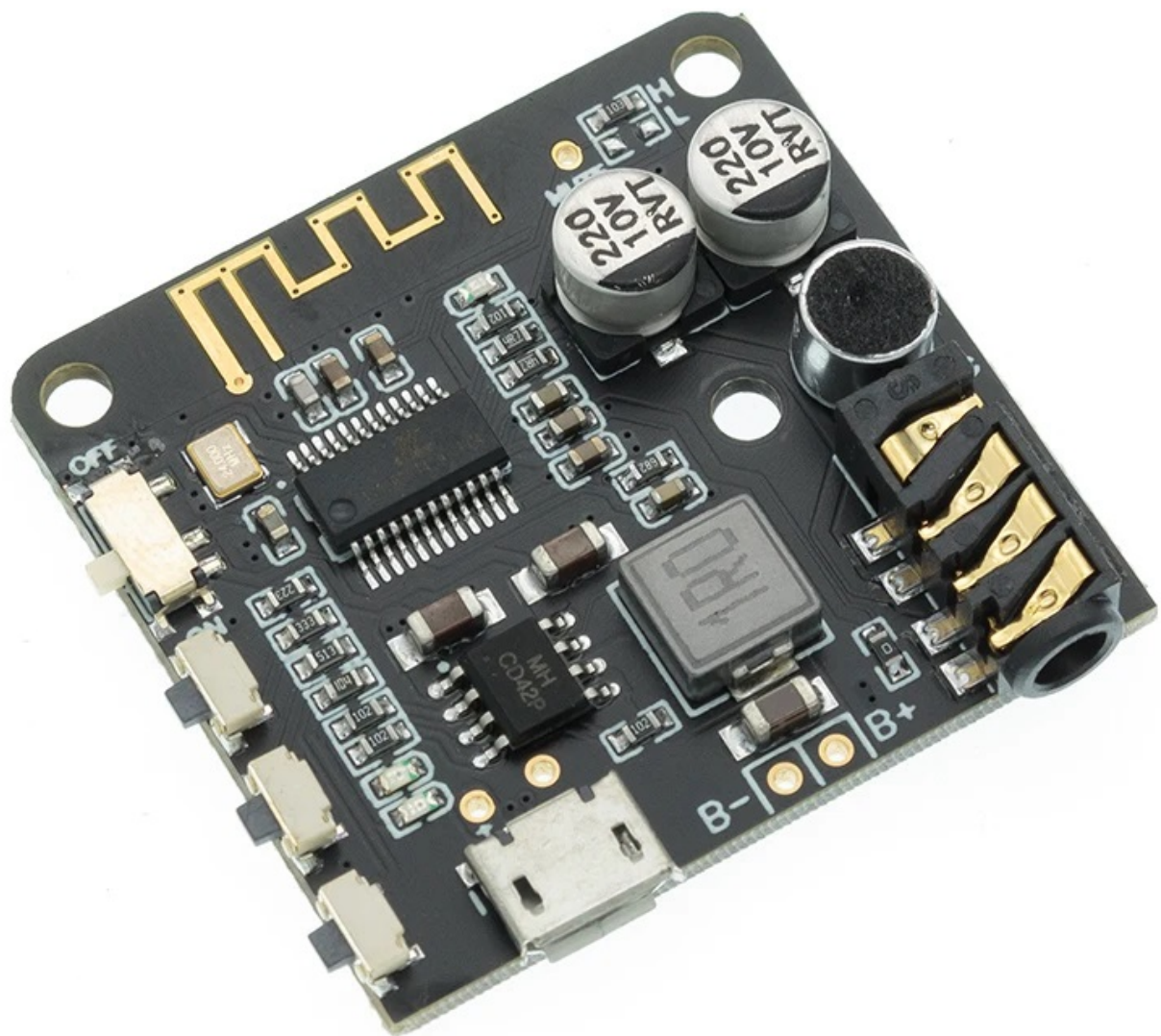
Odtwarzacz Bluetooth z wyjściem słuchawkowym lub AUX to urządzenie umożliwiające bezprzewodowe przesyłanie sygnału dźwiękowego z urządzeń takich jak smartfony, tablety czy komputery. Posiada on wbudowany moduł Bluetooth, który pozwala na sparowanie z innymi urządzeniami obsługującymi tę technologię w celu odtwarzania muzyki bez konieczności korzystania z kabli. Dodatkowo, często wyposażony jest w wyjście słuchawkowe lub złącze AUX, co umożliwia podłączenie urządzenia do różnych rodzajów głośników, zestawów audio czy słuchawek przewodowych. Dzięki temu, użytkownik może swobodnie korzystać z ulubionej muzyki bez ograniczeń wynikających z konkretnego sprzętu audio.

Parametry techniczne

- moduł odtwarzacz XY-BT-MINI
- napięcie zasilania: 3,7 - 5V DC
- można wykorzystać Li-Ion 18650 lub Li-Pol 1S
- wbudowane gniazdo micro USB do zasilania układu
- można wykorzystać ładowarkę USB
- moduł Bluetooth 5.0
- możliwość dolutowanie przewodów od źródła zasilania (pady na płytce)
- obsługa formatów: MP3 / WAV / APE / FLAC w formacie plików FAT16 /32
- wyjście stereo JACK 3,5 mm
- SNR: 90dB
- THD+N: -70dB
- dioda LED sygnalizująca połączenie z Bluetooth
- wbudowany Bluetooth
- obsługa profili Bluetooth: A2DP/AVCTP/AVDTP/AVRCP/HFP
- zasięg Bluetooth: poniżej 15m
- wymiary: 30 x 30 x 5mm
- moduł w obudowie z wyprowadzonymi gniazdami
- wbudowane przyciski sterujące







BLUETOOTH MP3 DECODER 5.0

LOSSLESS PLAYER WIRELESS STEREO MUSIC AMPLIFIER MODULE



BT5.0 AUDIO



BT5.0 AUDIO PRO

Model	BT5.0 Audio	BT5.0 Audio PRO
Bluetooth audio	✓	✓
Audio external interface	✓	✓
USB powered	✓	✓
Sound card function	✓	✓
Immersion gold craft	✓	✓
Battery powered	✓	✓
Charge while putting	✓	✓
Key control		✓
Voice calls		✓
Mute control (MUTE)		✓
Bluetooth version	Bluetooth V5.0	
Decoding format	HFPV1.7, A2DPV1.2, AVRCPV1.5, AVCTPV1.2, AVDTPV1.2	

PRODUCT PARAMETERS

POWER IN	3.7V-5V DC
Signal to noise ratio	90DB
Total harmonic distortion	-70dB
Crosstalk	-86DB
Support configuration file	HFP/ A2DP/AVRCP/ AVCTPV/ AVDTPV/
Transmission distance	15M
Decoding format	WAV+APE+FLAC+MP3

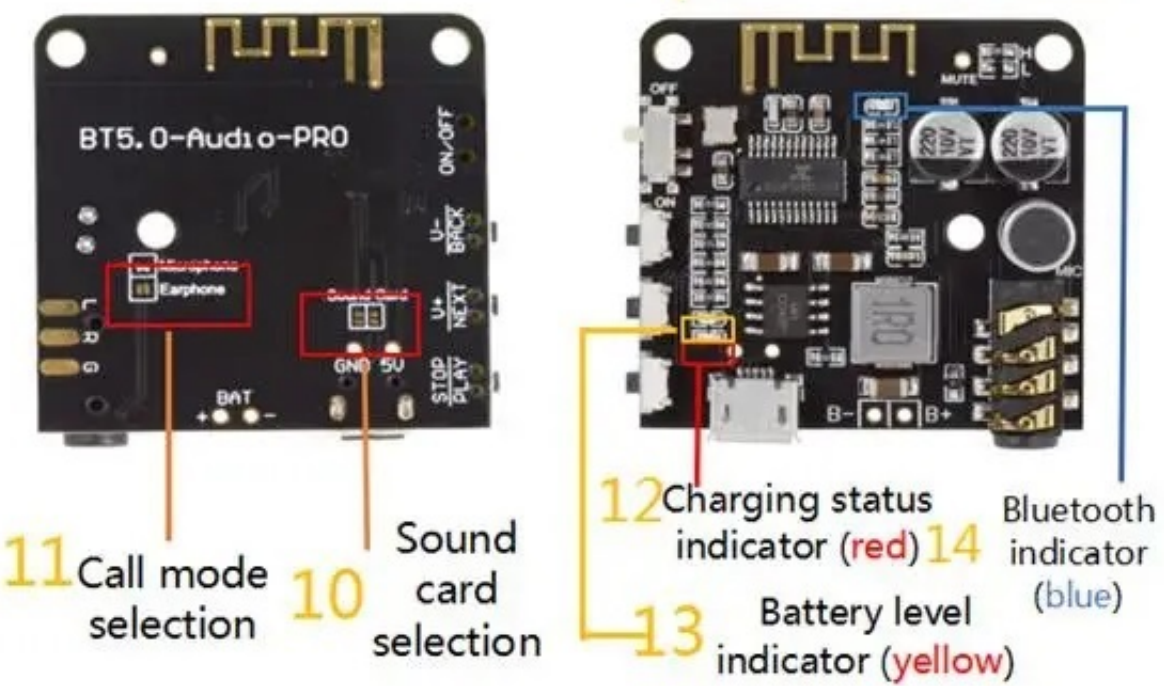
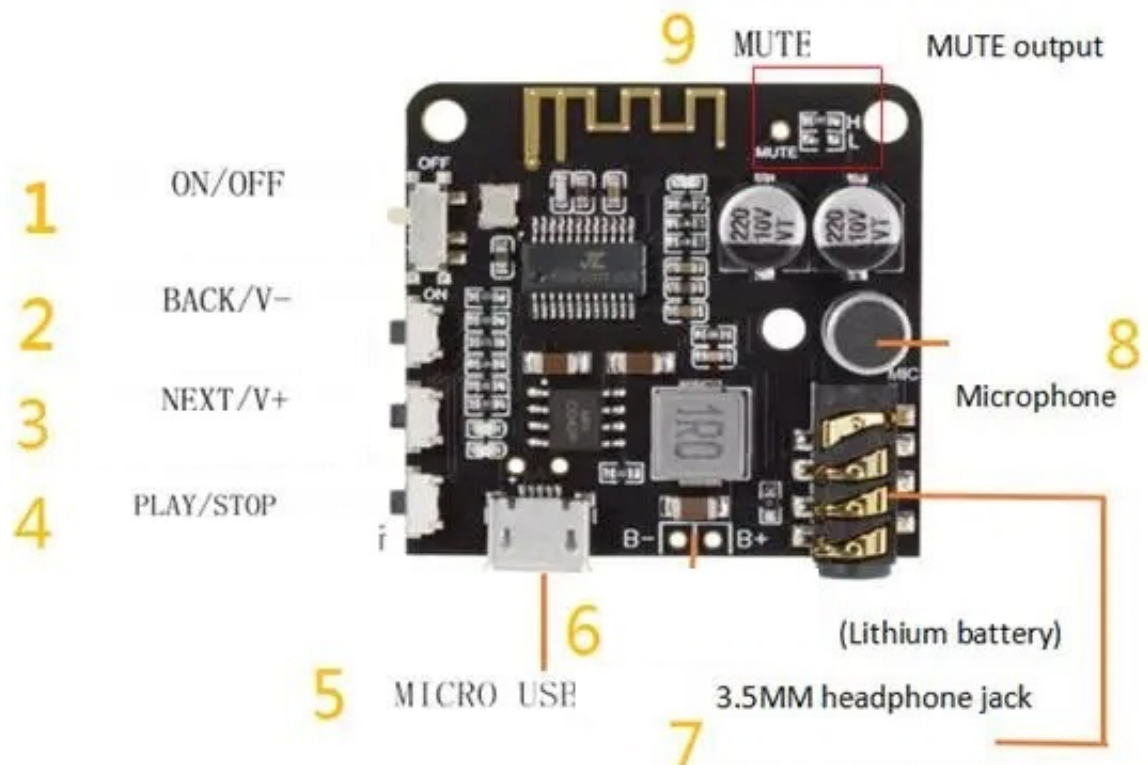
BT5.0 AUDIO



BT5.0 AUDIO PRO







Types	NO*	Button/interface	Features	Detailed operation
Button	1	ON/OFF	Bluetooth power on/off	Note that battery charging is not controlled by this switch. ON:Bluetooth starts to work and the blue light is on OFF: Bluetooth stops working.
	2	BACK/V-	Previous/Decrease volume	Short press: Previous song Long press: Turn down the volume.
	3	NEXT/V+	Next /Turn up the volume	Short press: next song Long press: Turn up the volume, note that there will be a beep sound when the volume is adjusted to the
	4	PLAY/STOP	Play/pause, Answer/Hang up	During Bluetooth music playback, short press to control music playback or pause When the phone calls, short press to connect the phone, and short press again to hang up.
Interface	5	MICRO USB Power	MICRO USB power supply 5V	It can also be powered through the back pad 5V and GND wire.
	6	B+ B-	Lithium battery powered	Really realize charging and discharging at the same time, the battery can be directly charged through the USB power supply Bluetooth can continue to work normally during charging. (B+ B- do not reverse)
	7	Headphone jack	3.5MM audio output/call sending	The factory default is soldered on the Microphone, and the onboard MIC sends the call. Note that the pads in the two boxes cannot be tinned at the same time. If the headset does not have a microphone, the audio connector is a three-segment layer, and the solder pad on the back of the module Microphone box is tin. At this time, the onboard MIC sends a message.
	8	Microphone	Call delivery	
	9	Microphone Earphone	Call mode selection	If the earphone is equipped with a microphone, that is, the audio connector is a four-segment layer, the tin is placed on the pad in the Earphone box on the back of the module. At this time, the microphone on the on-board headset sends a message.
	10	MUTE	Amplifier board mute control interface	The high and low levels can be selected through the resistor next to the MUTE interface. Default H, high level output When the resistance welding pad on H is output high level, that is, when there is sound output, MUTE is high level 3.3V, when there is no sound output, MUTE is low level 0V. When the resistance welding pad is on L, the output is low level effective, that is, when there is sound output, MUTE is low level 0V, when there is no sound output, MUTE is high level 3.3V.
	11	Souand Card	Computer sound card function	Not used by default. Tin the pads in the two boxes corresponding to the Sound Card on the back of the module. At this time, it can be used as a sound card by connecting it to the USB port of the computer through the USB cable. That is, the sound played by the computer is output through the audio interface of the module.
Indicator light	12	Charging status indicator (red)	Charging status indicator (red) Battery level indicator (yellow)	(1) Separate USB power supply: The red light flashes, indicating that the power supply is normal.
	13	Battery level indicator (yellow)		(2) Separate battery power supply: the yellow light is always on, the battery power supply is normal; the yellow light flashes, the power is low (3) Connect USB and battery at the same time: red light flashes-battery is charging; red light is always on-battery is full
	14	Bluetooth indicator (blue)	Bluetooth indicator (blue)	After the module is powered on, turn on the switch. At this time, the blue light flashes quickly, indicating that it is waiting for connection; The blue light is always on after the connection is Play the song, at this time the blue light flashes slowly

