

---

Dane aktualne na dzień: 30-04-2026 19:03

Link do produktu: <https://www.gotronik.pl/nucleo-64-l073rz-zestaw-startowy-z-stm32l073rzt6-p-9145.html>

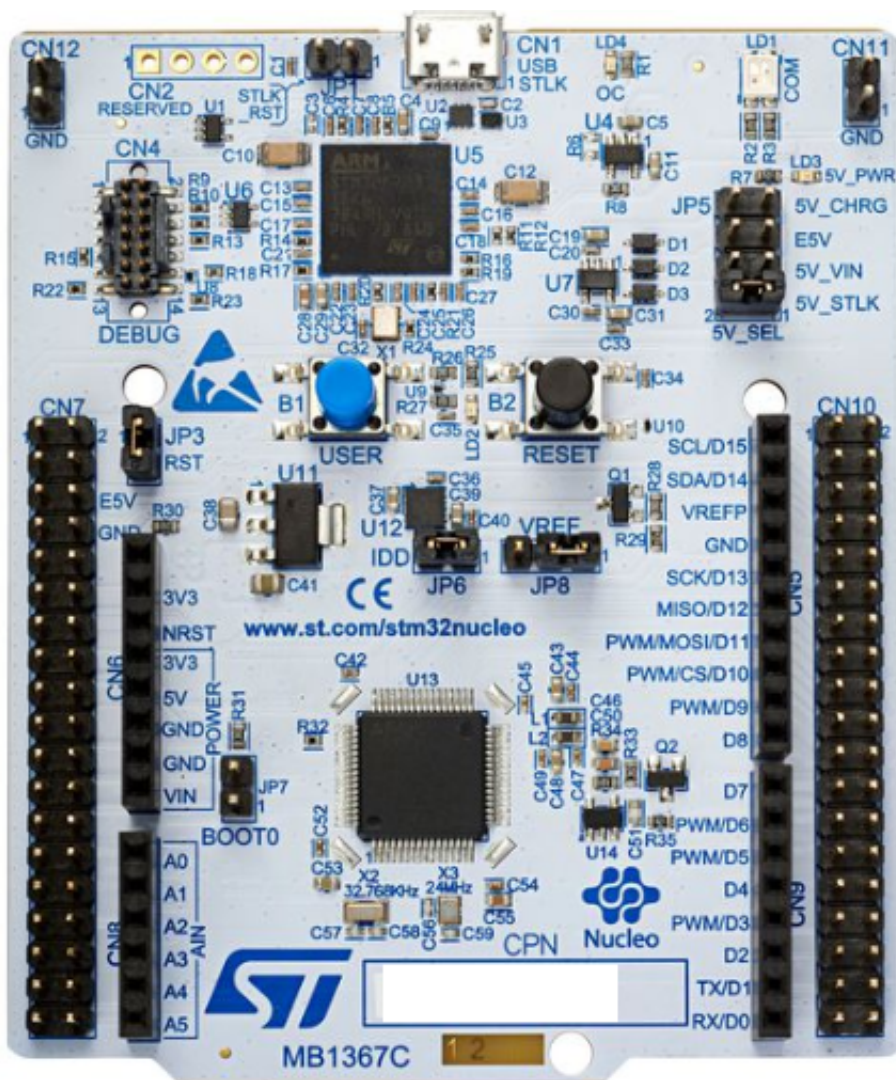


## NUCLEO-64 L073RZ zestaw startowy z STM32L073RZT6

|                  |                      |
|------------------|----------------------|
| Cena brutto      | <b>95,00 zł</b>      |
| Cena netto       | <b>77,24 zł</b>      |
| Czas wysyłki     | <b>24 godziny</b>    |
| Numer katalogowy | <b>NUCLEO-L073RZ</b> |

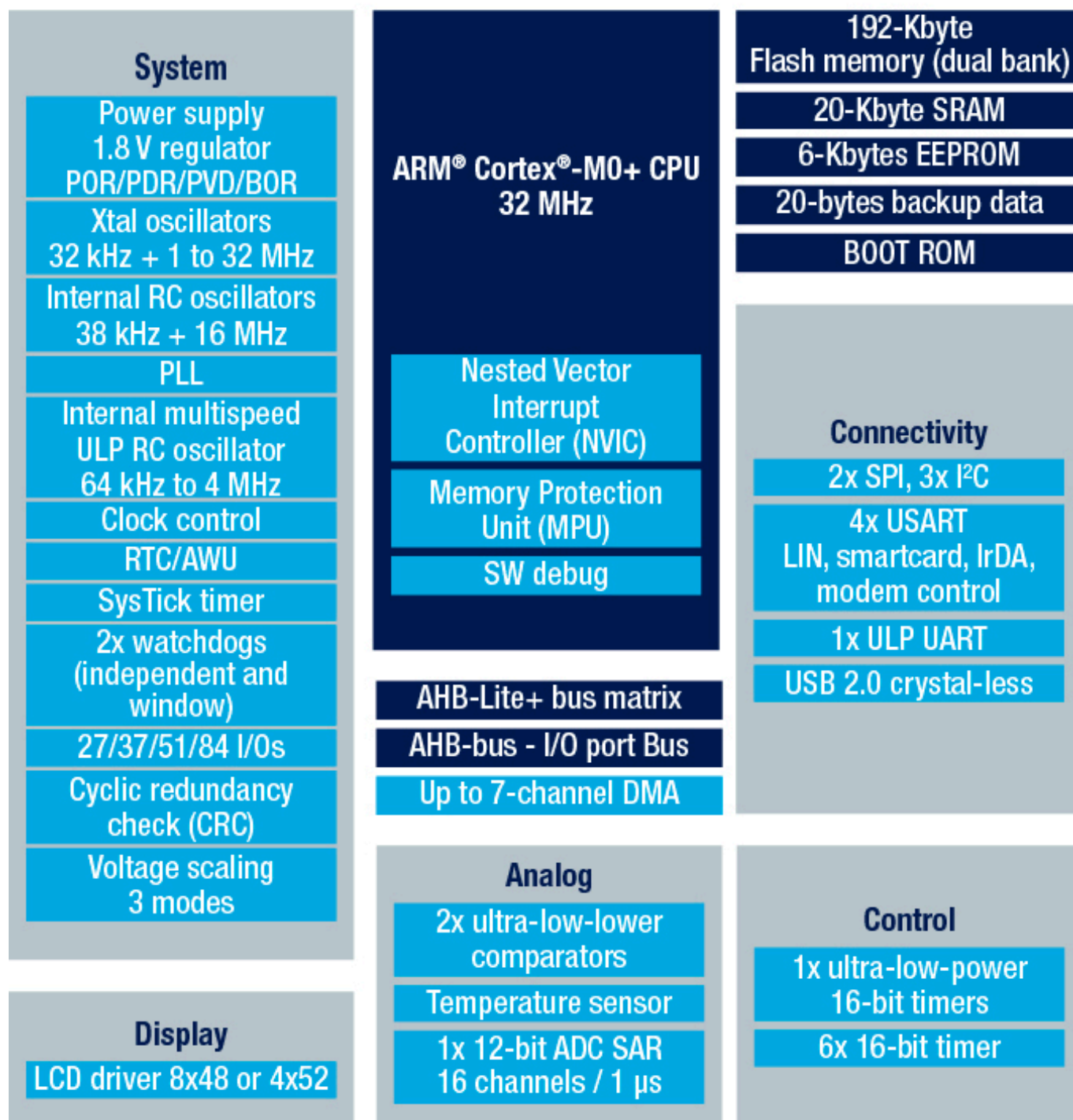
Opis produktu

## Zestaw startowy NUCLEO-L073RZ z STM32L073RZT6



Zestaw startowy, serii NUCLEO z 32-bitowym mikrokontrolerem rodziny ARM Cortex M0+, STM32L073RZT6. Wbudowana pamięć Flash 192kB, SRAM 20kB, taktowanie 32MHz. Nucleo to prosty moduł pozwalający na tworzenie i realizację projektów w oparciu o wydajny mikrokontroler z 32 bitowym rdzeniem. Rozkład wyprowadzeń modułu jest zgodny i kompatybilny z Arduino UNO V3. Układ współpracuje z popularnymi platformami programistycznymi takimi jak Keil, IAR oraz środowiska z kompilatorami GCC. STM32 Nucleo zapewnia użytkownikowi niedrogą, prostą metodę sprawdzenia oraz tworzenia nowych prototypów. Obsługuje łączność Arduino, a złącza ST Morpho poprawia funkcjonalność wraz z dodatkowymi nakładkami. Nucleo nie wymaga dodatkowych programatorów, ponieważ zawiera moduł debugowania/programowania zgodny z ST-LINK/V2-1.

# STM32L073xZ



## Dane techniczne:

- nazwa rodziny: NUCLEO-64
- wbudowany mikrokontroler rodziny ARM z rdzeniem Cortex M0+
- mikrokontroler: STM32L073RZT6
- płytko ewaluacyjna
- częstotliwość taktowania: 32MHz
- pamięć Flash 192kB
- pamięć SRAM 20kB
- rozmieszczenie wyprowadzeń zgodne z Arduino UNO V3
- złącza rozszerzeń STMicroelectronics Morpho
- płytko zgodna z bezpłatnym środowiskiem programistycznym mbed
- wbudowany debugger ST-LINK/v2-1 ze złączem SWD

- możliwość zastosowanie debugera do pracy z innymi płytkami mikrokontrolera STM32
- szeroki zestaw interfejsów: microUSB, I2C x 3, SPI x 2, I2S, USART x 4, UART
- Vdd 1,65 - 3,6V
- napięcie zasilania 3,3V, 5V, 7-12V
- możliwość zasilania z USB oraz z zasilacza zewnętrznego
- przycisk RESET oraz USER
- trzy diody LED: komunikacja USB (LD1), zasilanie (LD3), LED użytkownika (LD2)
- współpracuje z różnymi środowiskami, takimi jak: IAR, Keil, oraz korzystające z kompilatora GCC
- GPIO 51 z możliwością przerywania zewnętrznego
- timery
- 11 timerów:
- 1 x przetwornik A/C 12-bitowy
- 2 x przetwornik C/A 12-bitowy
- 1 x wzmacniacz operacyjny z wbudowanym PGA
- 2 x komparator niskiej mocy
- RTC
- generator liczb losowych
- pojemnościowe kanały czujnikowe (24)

### Przydatne linki

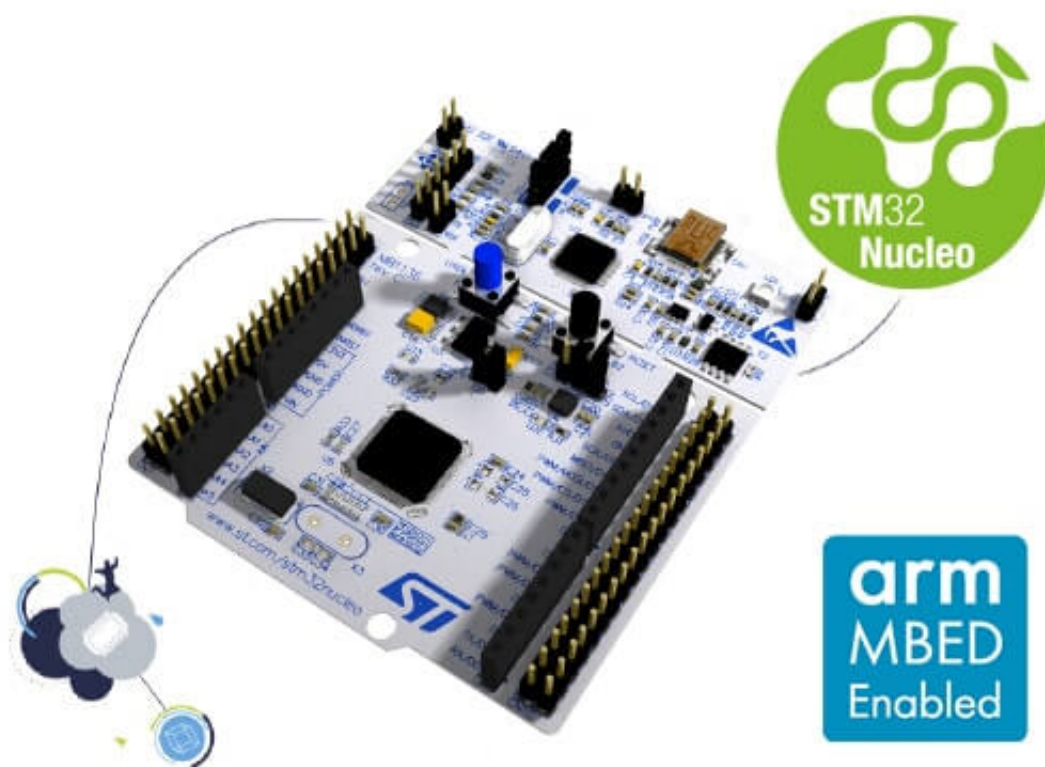
[Dokumentacja NUCLEO](#)

[User Guide](#)

[Manual - Getting Started](#)

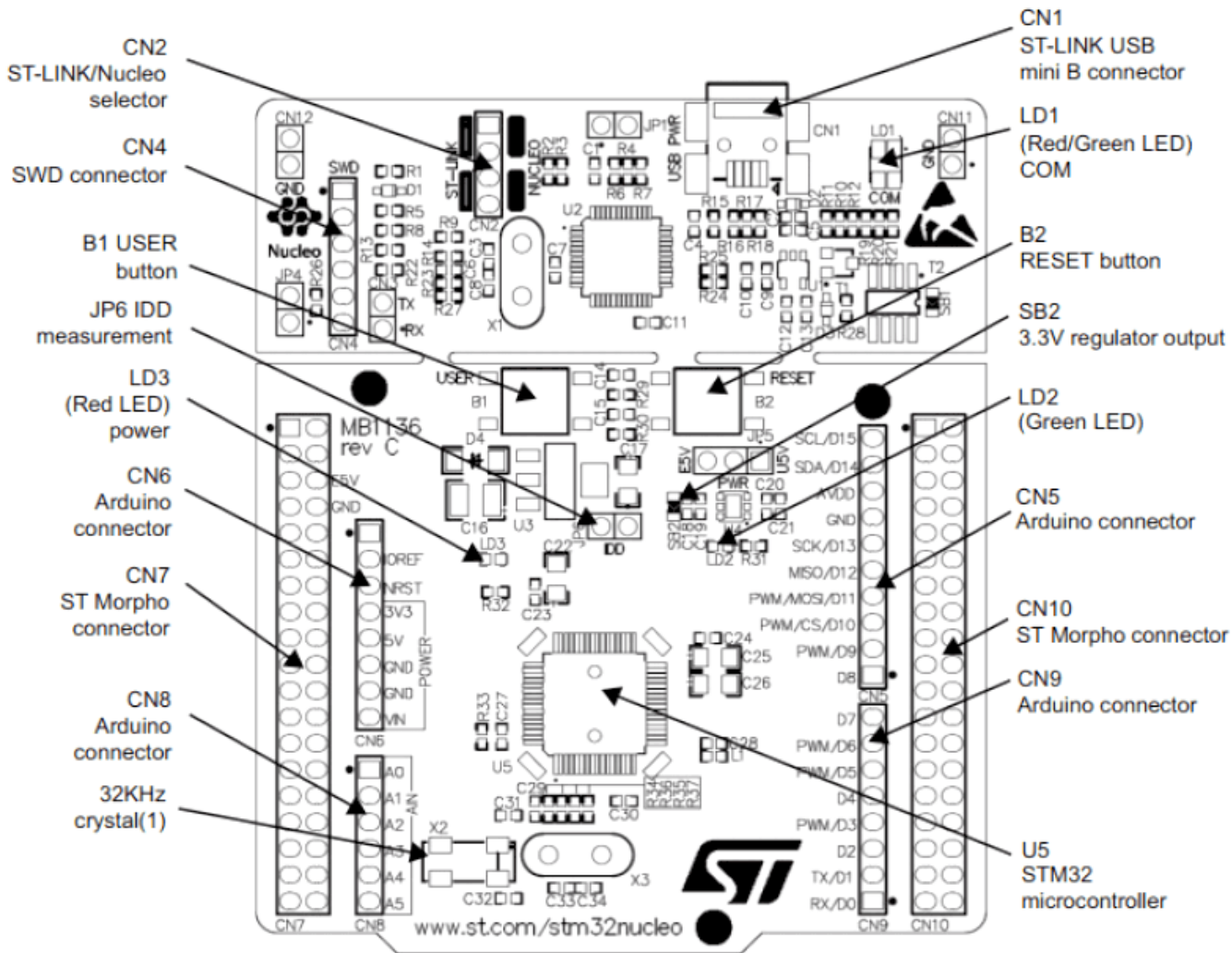
[Strona producenta](#)

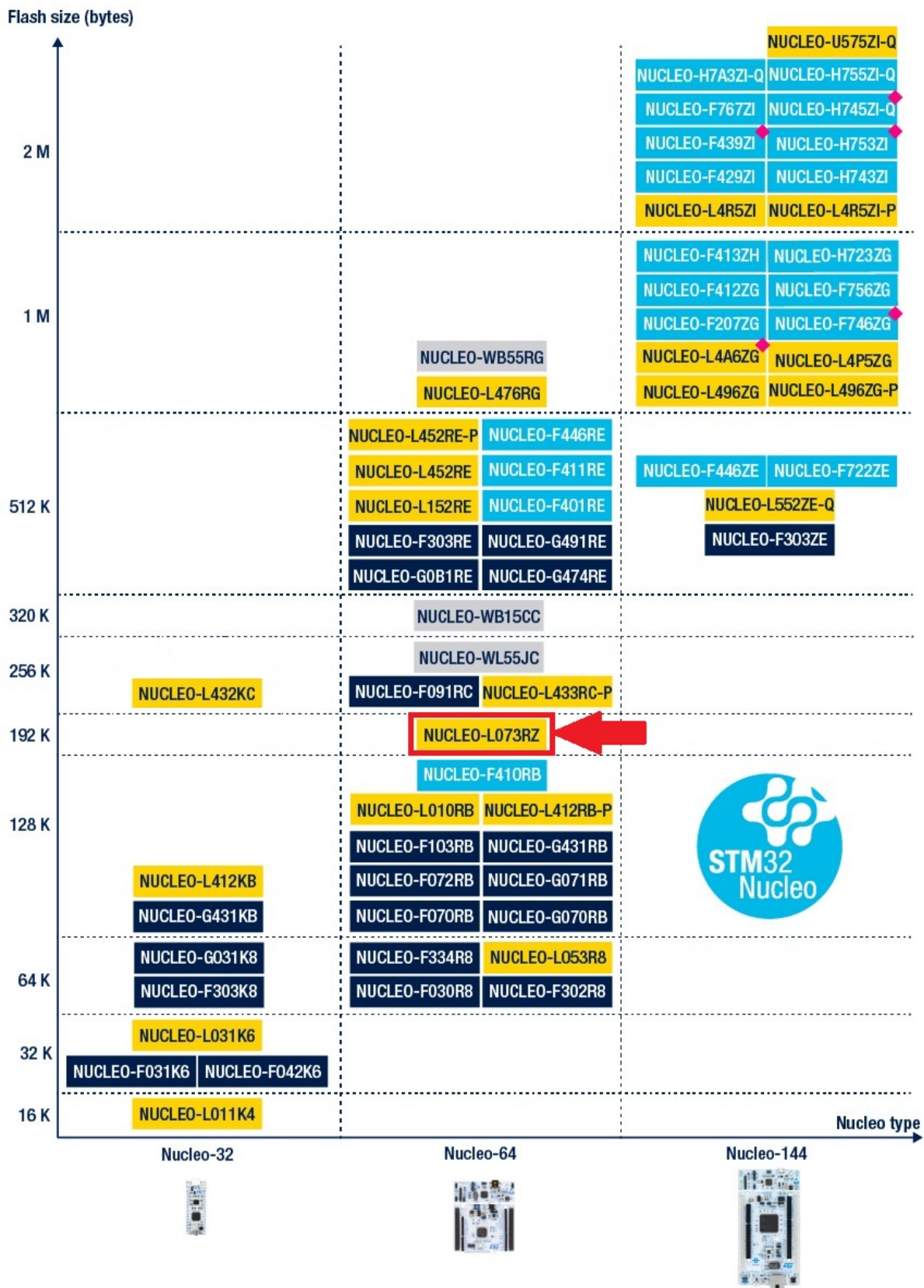
[Mbed](#)



NUCLEO-L073RZ

| CN2   |      | CN6   |      | CN8  |       | CN10 |      |
|-------|------|-------|------|------|-------|------|------|
| PC10  | GND  | PC11  | D18  | PC3  | PA8   | PC8  | PC8  |
| PC12  | PC2  | PC12  | PC2  | PC5  | PA9   | PC5  | PC5  |
| VDD   | PC3  | VDD   | PC3  | PC6  | PA10  | PC6  | PC6  |
| BOOT0 | PC4  | BOOT0 | PC4  | PC7  | PA11  | PC7  | PC7  |
| NC    | PC5  | NC    | PC5  | PC8  | PA12  | PC8  | PC8  |
| PC13  | PC6  | PC13  | PC6  | PC9  | PA13  | PC9  | PC9  |
| PC14  | PC7  | PC14  | PC7  | PC10 | PA14  | PC10 | PC10 |
| PC15  | PC8  | PC15  | PC8  | PC11 | PA15  | PC11 | PC11 |
| PC16  | PC9  | PC16  | PC9  | PC12 | PA16  | PC12 | PC12 |
| PC17  | PC10 | PC17  | PC10 | PC13 | PA17  | PC13 | PC13 |
| PC18  | PC11 | PC18  | PC11 | PC14 | PA18  | PC14 | PC14 |
| PC19  | PC12 | PC19  | PC12 | PC15 | PA19  | PC15 | PC15 |
| PC20  | PC13 | PC20  | PC13 | PC16 | PA20  | PC16 | PC16 |
| PC21  | PC14 | PC21  | PC14 | PC17 | PA21  | PC17 | PC17 |
| PC22  | PC15 | PC22  | PC15 | PC18 | PA22  | PC18 | PC18 |
| PC23  | PC16 | PC23  | PC16 | PC19 | PA23  | PC19 | PC19 |
| PC24  | PC17 | PC24  | PC17 | PC20 | PA24  | PC20 | PC20 |
| PC25  | PC18 | PC25  | PC18 | PC21 | PA25  | PC21 | PC21 |
| PC26  | PC19 | PC26  | PC19 | PC22 | PA26  | PC22 | PC22 |
| PC27  | PC20 | PC27  | PC20 | PC23 | PA27  | PC23 | PC23 |
| PC28  | PC21 | PC28  | PC21 | PC24 | PA28  | PC24 | PC24 |
| PC29  | PC22 | PC29  | PC22 | PC25 | PA29  | PC25 | PC25 |
| PC30  | PC23 | PC30  | PC23 | PC26 | PA30  | PC26 | PC26 |
| PC31  | PC24 | PC31  | PC24 | PC27 | PA31  | PC27 | PC27 |
| PC32  | PC25 | PC32  | PC25 | PC28 | PA32  | PC28 | PC28 |
| PC33  | PC26 | PC33  | PC26 | PC29 | PA33  | PC29 | PC29 |
| PC34  | PC27 | PC34  | PC27 | PC30 | PA34  | PC30 | PC30 |
| PC35  | PC28 | PC35  | PC28 | PC31 | PA35  | PC31 | PC31 |
| PC36  | PC29 | PC36  | PC29 | PC32 | PA36  | PC32 | PC32 |
| PC37  | PC30 | PC37  | PC30 | PC33 | PA37  | PC33 | PC33 |
| PC38  | PC31 | PC38  | PC31 | PC34 | PA38  | PC34 | PC34 |
| PC39  | PC32 | PC39  | PC32 | PC35 | PA39  | PC35 | PC35 |
| PC40  | PC33 | PC40  | PC33 | PC36 | PA40  | PC36 | PC36 |
| PC41  | PC34 | PC41  | PC34 | PC37 | PA41  | PC37 | PC37 |
| PC42  | PC35 | PC42  | PC35 | PC38 | PA42  | PC38 | PC38 |
| PC43  | PC36 | PC43  | PC36 | PC39 | PA43  | PC39 | PC39 |
| PC44  | PC37 | PC44  | PC37 | PC40 | PA44  | PC40 | PC40 |
| PC45  | PC38 | PC45  | PC38 | PC41 | PA45  | PC41 | PC41 |
| PC46  | PC39 | PC46  | PC39 | PC42 | PA46  | PC42 | PC42 |
| PC47  | PC40 | PC47  | PC40 | PC43 | PA47  | PC43 | PC43 |
| PC48  | PC41 | PC48  | PC41 | PC44 | PA48  | PC44 | PC44 |
| PC49  | PC42 | PC49  | PC42 | PC45 | PA49  | PC45 | PC45 |
| PC50  | PC43 | PC50  | PC43 | PC46 | PA50  | PC46 | PC46 |
| PC51  | PC44 | PC51  | PC44 | PC47 | PA51  | PC47 | PC47 |
| PC52  | PC45 | PC52  | PC45 | PC48 | PA52  | PC48 | PC48 |
| PC53  | PC46 | PC53  | PC46 | PC49 | PA53  | PC49 | PC49 |
| PC54  | PC47 | PC54  | PC47 | PC50 | PA54  | PC50 | PC50 |
| PC55  | PC48 | PC55  | PC48 | PC51 | PA55  | PC51 | PC51 |
| PC56  | PC49 | PC56  | PC49 | PC52 | PA56  | PC52 | PC52 |
| PC57  | PC50 | PC57  | PC50 | PC53 | PA57  | PC53 | PC53 |
| PC58  | PC51 | PC58  | PC51 | PC54 | PA58  | PC54 | PC54 |
| PC59  | PC52 | PC59  | PC52 | PC55 | PA59  | PC55 | PC55 |
| PC60  | PC53 | PC60  | PC53 | PC56 | PA60  | PC56 | PC56 |
| PC61  | PC54 | PC61  | PC54 | PC57 | PA61  | PC57 | PC57 |
| PC62  | PC55 | PC62  | PC55 | PC58 | PA62  | PC58 | PC58 |
| PC63  | PC56 | PC63  | PC56 | PC59 | PA63  | PC59 | PC59 |
| PC64  | PC57 | PC64  | PC57 | PC60 | PA64  | PC60 | PC60 |
| PC65  | PC58 | PC65  | PC58 | PC61 | PA65  | PC61 | PC61 |
| PC66  | PC59 | PC66  | PC59 | PC62 | PA66  | PC62 | PC62 |
| PC67  | PC60 | PC67  | PC60 | PC63 | PA67  | PC63 | PC63 |
| PC68  | PC61 | PC68  | PC61 | PC64 | PA68  | PC64 | PC64 |
| PC69  | PC62 | PC69  | PC62 | PC65 | PA69  | PC65 | PC65 |
| PC70  | PC63 | PC70  | PC63 | PC66 | PA70  | PC66 | PC66 |
| PC71  | PC64 | PC71  | PC64 | PC67 | PA71  | PC67 | PC67 |
| PC72  | PC65 | PC72  | PC65 | PC68 | PA72  | PC68 | PC68 |
| PC73  | PC66 | PC73  | PC66 | PC69 | PA73  | PC69 | PC69 |
| PC74  | PC67 | PC74  | PC67 | PC70 | PA74  | PC70 | PC70 |
| PC75  | PC68 | PC75  | PC68 | PC71 | PA75  | PC71 | PC71 |
| PC76  | PC69 | PC76  | PC69 | PC72 | PA76  | PC72 | PC72 |
| PC77  | PC70 | PC77  | PC70 | PC73 | PA77  | PC73 | PC73 |
| PC78  | PC71 | PC78  | PC71 | PC74 | PA78  | PC74 | PC74 |
| PC79  | PC72 | PC79  | PC72 | PC75 | PA79  | PC75 | PC75 |
| PC80  | PC73 | PC80  | PC73 | PC76 | PA80  | PC76 | PC76 |
| PC81  | PC74 | PC81  | PC74 | PC77 | PA81  | PC77 | PC77 |
| PC82  | PC75 | PC82  | PC75 | PC78 | PA82  | PC78 | PC78 |
| PC83  | PC76 | PC83  | PC76 | PC79 | PA83  | PC79 | PC79 |
| PC84  | PC77 | PC84  | PC77 | PC80 | PA84  | PC80 | PC80 |
| PC85  | PC78 | PC85  | PC78 | PC81 | PA85  | PC81 | PC81 |
| PC86  | PC79 | PC86  | PC79 | PC82 | PA86  | PC82 | PC82 |
| PC87  | PC80 | PC87  | PC80 | PC83 | PA87  | PC83 | PC83 |
| PC88  | PC81 | PC88  | PC81 | PC84 | PA88  | PC84 | PC84 |
| PC89  | PC82 | PC89  | PC82 | PC85 | PA89  | PC85 | PC85 |
| PC90  | PC83 | PC90  | PC83 | PC86 | PA90  | PC86 | PC86 |
| PC91  | PC84 | PC91  | PC84 | PC87 | PA91  | PC87 | PC87 |
| PC92  | PC85 | PC92  | PC85 | PC88 | PA92  | PC88 | PC88 |
| PC93  | PC86 | PC93  | PC86 | PC89 | PA93  | PC89 | PC89 |
| PC94  | PC87 | PC94  | PC87 | PC90 | PA94  | PC90 | PC90 |
| PC95  | PC88 | PC95  | PC88 | PC91 | PA95  | PC91 | PC91 |
| PC96  | PC89 | PC96  | PC89 | PC92 | PA96  | PC92 | PC92 |
| PC97  | PC90 | PC97  | PC90 | PC93 | PA97  | PC93 | PC93 |
| PC98  | PC91 | PC98  | PC91 | PC94 | PA98  | PC94 | PC94 |
| PC99  | PC92 | PC99  | PC92 | PC95 | PA99  | PC95 | PC95 |
| PC100 | PC93 | PC100 | PC93 | PC96 | PA100 | PC96 | PC96 |





Legend:  Mainstream  Ultra-low-power  High-performance  Wireless

-P Corresponding to External SMPS version -Q Corresponding to Internal SMPS version

◆ HW crypto/Hash version available

